

Improvement Planner



Data collected between
25th July 2021 and 20th August 2021

© Anspear 2012-2021

Contents

Introduction	1
The report at a glance	2
Ofsted: the three I's	2
The surveying process	3
Overview	5
Strengths that could be shared with others	5
Active priorities for the next two years	5
Partnership welcomed	6
CPD priorities	6
Development issues	7
CPD priorities	21
Collaboration	29
Individual school data	43
Additional school information	56

Introduction

This report provides details of the areas of strength and development priorities among schools in your trust or other group of schools. It is based entirely on data drawn from the schools' responses to the *Improvement Planner* questionnaire. It offers valuable indicators about potential areas of collaboration and opportunities for professional development activities.

The report is divided into the following sections:

- **Introduction** – This explains how the *Improvement Planner* questionnaire gathers schools' data.
- **Overview** – An overview of the top strengths, active priorities and issues in which partnerships are welcomed, plus which issues are considered CPD priorities.
- **Development issues** – An indication of schools' current position on development issues.
- **CPD priorities** – An indication of which development issues schools consider to be continuing professional development (CPD) priorities.
- **Collaboration** – A summary of the development issues and lists of schools who could potentially collaborate on these issues.
- **Individual school data** – A school-by-school breakdown of development issues, along with any additional comments made by the school.

Some items throughout the report are presented in colour. Should you wish to copy or print the report, you will need to do so in colour.

A total of 29 schools undertook the questionnaire and submitted their data before the administrator requested that this report be generated.

Data was collected between 25th July 2021 and 20th August 2021.

The report at a glance

Your *Improvement Planner* report can help you answer the following questions:

- **What are our strengths?** - Turn to the *Overview* section, which lists the ten areas that most schools rated as particular strengths.
- **What areas are we currently developing?** - The *Overview* also lists the ten areas that were most commonly marked as active development priorities.
- **How can we work together?** - The *Collaboration* section goes area by area, listing the schools that consider themselves strong in that area and those that would welcome partnership from others. The next step is for those schools to begin working together, sharing expertise and bringing about collaborative improvement.

Ofsted: the three I's

In terms of the current Ofsted framework, the *Improvement Planner* can provide valuable evidence for each of the three I's in terms of curriculum planning, delivery, monitoring and evaluation:

- **Intent** - Your trust is mindful of areas where improvement is necessary and has taken steps to bring this about by facilitating collaboration between its schools.
- **Implementation** - Your trust is aware of its school's current development priorities and schools are actively working to improve, both on their own initiative and in conjunction with other schools.
- **Impact** - Your schools are aware of their areas of strength, and are working to share that expertise with other schools as well as having a positive impact their own students and staff.

The surveying process

These notes explain how the *Improvement Planner* collects and organises data. It is strongly advised that you read this before analysing the report.

Development issues

The questionnaire enables schools to provide information about the following development issues:

Curriculum areas

- English
- Maths
- Science
- Computing
- Design & Technology
- Geography
- History
- MFL
- Arts
- Performing Arts
- Music
- Religion and Worldview
- Sport/PE
- Citizenship & PSHE
- Early Years
- Vocational Education
- Extracurricular activities

Classroom issues

- Behaviour for learning
- Planning and preparation for learning
- Assessment (AfL and AoL)
- Marking and feedback
- Use of technology to support learners
- Supporting and stretching all learners
- Use of teaching assistants

Pupils

- Personal development
- SEND provision
- Pupil Premium provision
- English as an additional language (EAL)
- Pastoral and family engagement
- Attendance

Leadership & management

- Monitoring & evaluation
- SEF completion
- Governance
- Leadership team development
- Staff retention & recruitment
- Performance management
- Early Career Framework (ITT, NQT, RQT)
- In-house CPD & training strategy
- Support staff management
- Subject leadership
- Safeguarding
- Careers

Infrastructure, administration & community issues

- Administration services
- Information management
- Financial management
- Catering management
- Buildings & site management
- Community partnerships
- Extended provision

Schools indicate their position on each development issue by choosing **one or more** of:

- Strength you could share with others
- Active priority for the next two years
- Partnership welcomed.

Schools may alternatively state that an issue is not applicable to them, or that none of the above responses applies.

Schools are also asked to indicate, for all issues that they recognise as strengths or active priorities or welcome partnerships in, which they believe to be CPD priorities. CPD priorities are those issues which would benefit from related CPD activities and opportunities for the staff involved. Schools are also able to make any additional comments deemed to be relevant.

Overview

The ten development issues that the greatest percentage of schools in your group perceived to be a strength, an active priority or an issue in which they would welcome a partnership are shown below and on page 6.

Strengths that could be shared with others

Issue	%	
Performance management	31	<div style="width: 31%;"><div style="width: 31%;"></div></div>
Extended provision	28	<div style="width: 28%;"><div style="width: 28%;"></div></div>
Geography	28	<div style="width: 28%;"><div style="width: 28%;"></div></div>
Information management	28	<div style="width: 28%;"><div style="width: 28%;"></div></div>
Pastoral and family engagement	28	<div style="width: 28%;"><div style="width: 28%;"></div></div>
Use of technology to support learners	28	<div style="width: 28%;"><div style="width: 28%;"></div></div>
Assessment (AfL and AoL)	24	<div style="width: 24%;"><div style="width: 24%;"></div></div>
Catering management	24	<div style="width: 24%;"><div style="width: 24%;"></div></div>
Community partnerships	24	<div style="width: 24%;"><div style="width: 24%;"></div></div>
English as an additional language (EAL)	24	<div style="width: 24%;"><div style="width: 24%;"></div></div>

Active priorities for the next two years

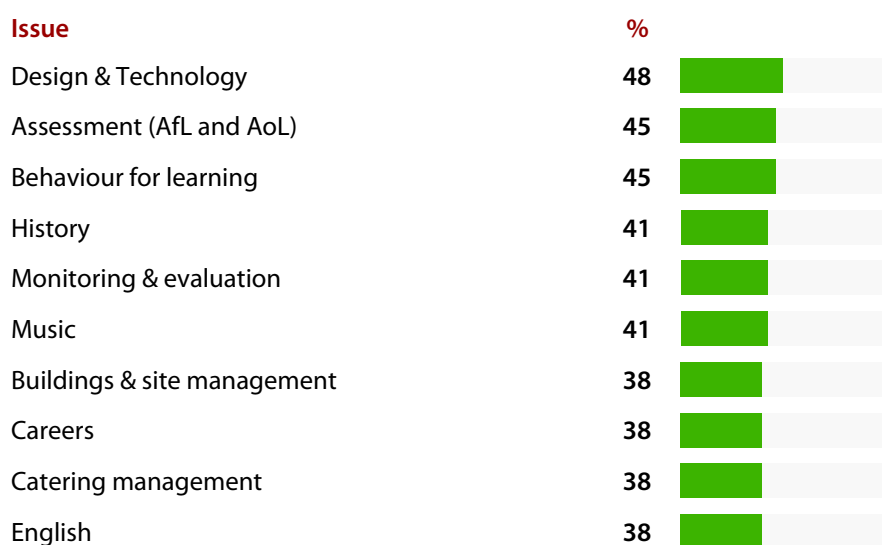
Issue	%	
Subject leadership	72	<div style="width: 72%;"><div style="width: 72%;"></div></div>
Design & Technology	69	<div style="width: 69%;"><div style="width: 69%;"></div></div>
Careers	66	<div style="width: 66%;"><div style="width: 66%;"></div></div>
Sport/PE	66	<div style="width: 66%;"><div style="width: 66%;"></div></div>
Arts	62	<div style="width: 62%;"><div style="width: 62%;"></div></div>
Buildings & site management	62	<div style="width: 62%;"><div style="width: 62%;"></div></div>
Early Career Framework (ITT, NQT, RQT)	62	<div style="width: 62%;"><div style="width: 62%;"></div></div>
Extended provision	62	<div style="width: 62%;"><div style="width: 62%;"></div></div>
Information management	62	<div style="width: 62%;"><div style="width: 62%;"></div></div>
Music	62	<div style="width: 62%;"><div style="width: 62%;"></div></div>

Partnership welcomed



CPD priorities

The ten development issues that the greatest percentage of schools in your group see as a CPD priority and believe that their school would benefit from related CPD activities in are shown below.



Development issues

The graphs below and on pages 8 to 20 show data related to development issues within schools in your group. The responses are shown as columns, with the height of a column indicating the percentage of schools that gave that response. The exact percentage for each column is shown underneath the column. Responses are coded as follows:

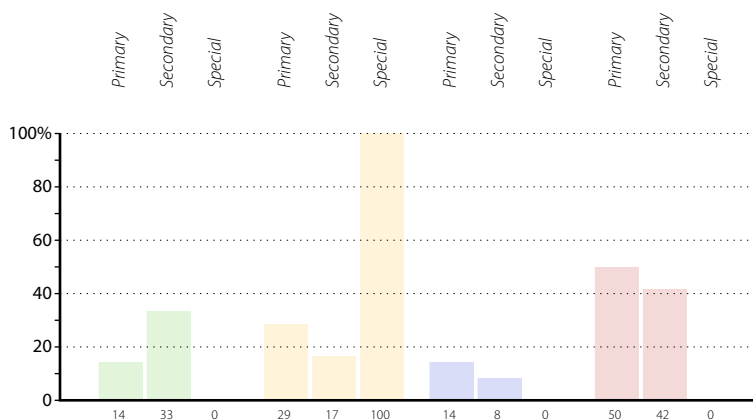
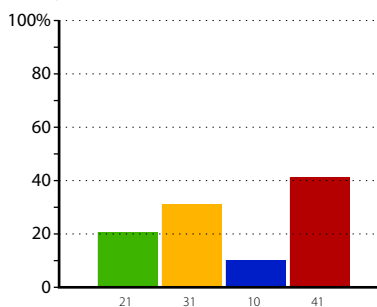
- Strength you could share with others
- Active priority for the next two years
- Partnership welcomed
- None of the above/not applicable to the school.

Note that each school can choose as many of the above responses as they deem applicable.

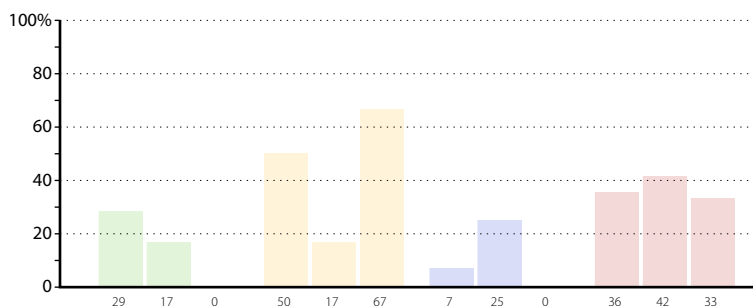
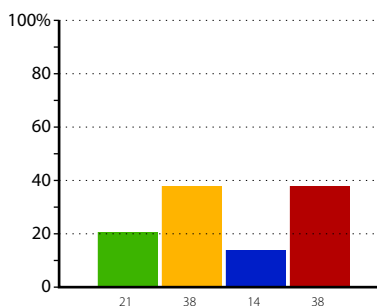
The combined results for all schools are shown in the graphs on the left; the graphs on the right show the results for schools in each phase (primary, secondary and special).

Curriculum areas

English

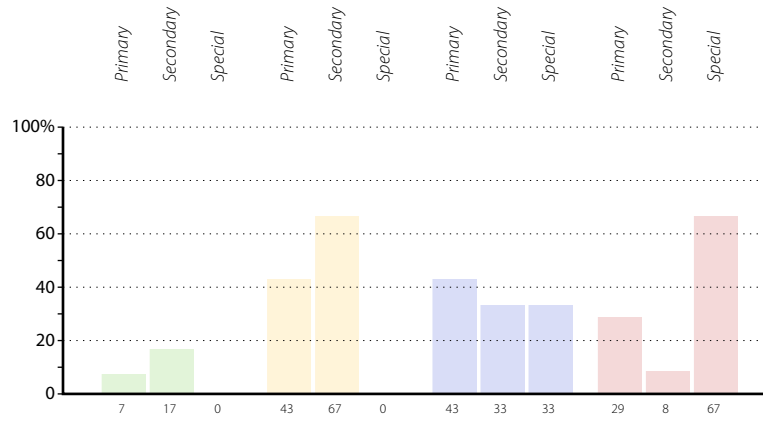
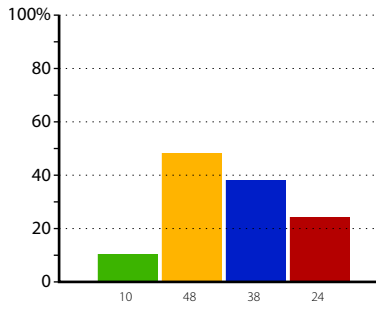


Maths

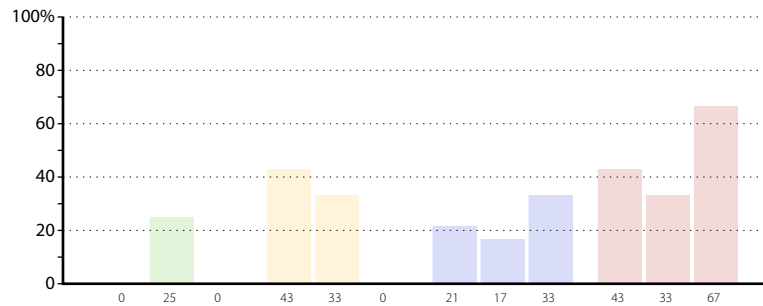
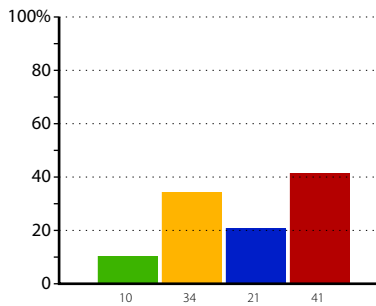


■ Strength you could share with others
 ■ Active priority for the next two years
 ■ Partnership welcomed
 ■ None of the above/not applicable

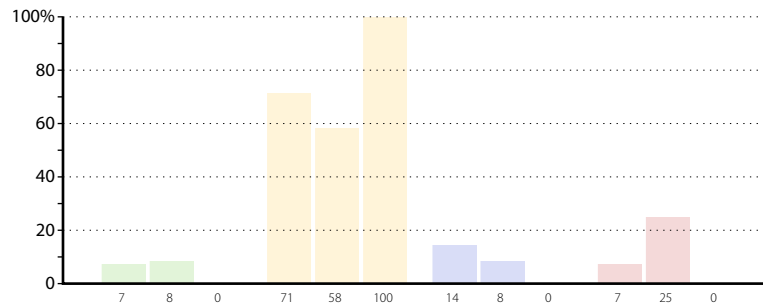
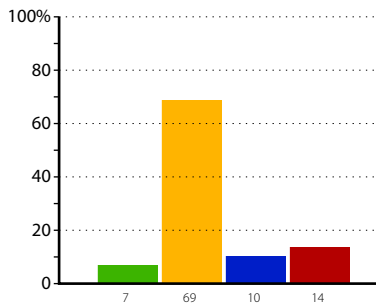
Science



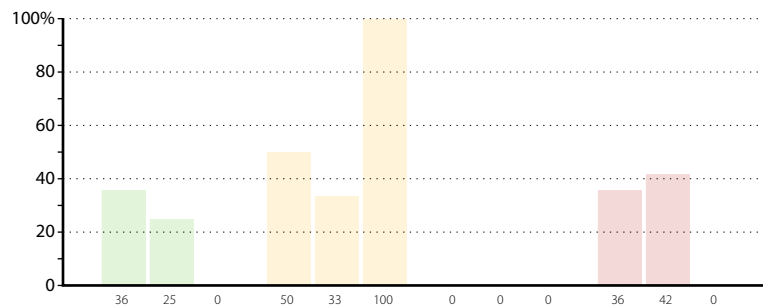
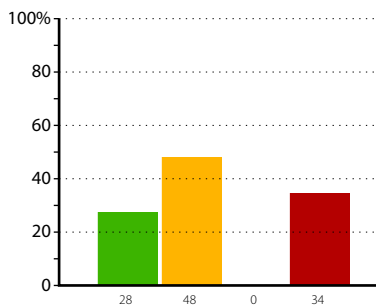
Computing



Design & Technology

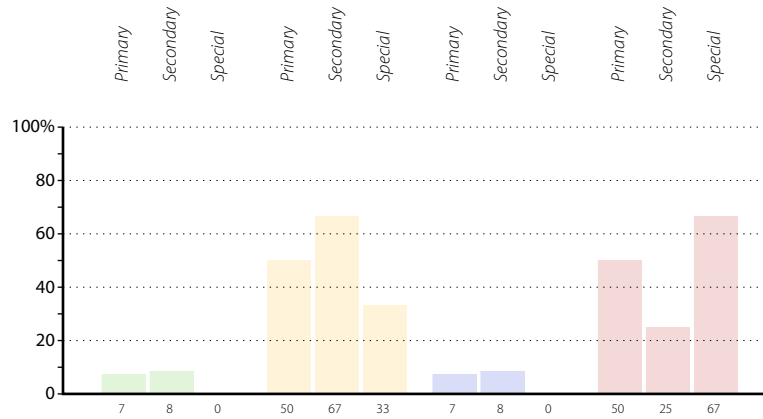
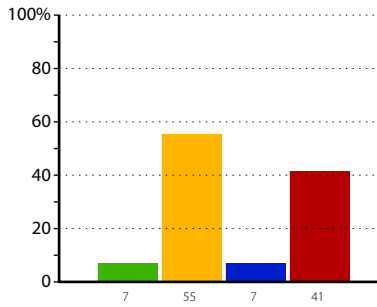


Geography

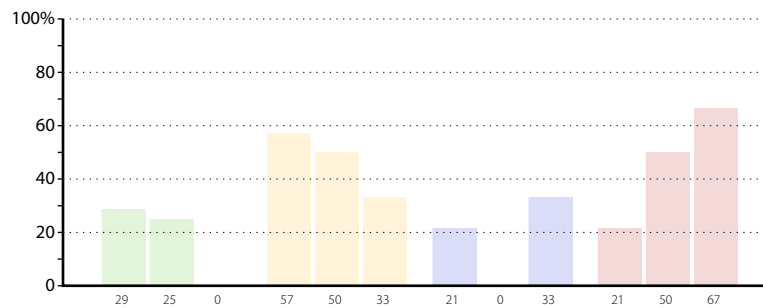
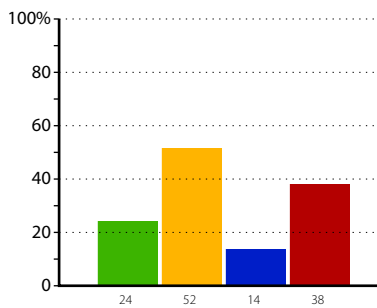


■ Strength you could share with others
 ■ Active priority for the next two years
 ■ Partnership welcomed
 ■ None of the above/not applicable

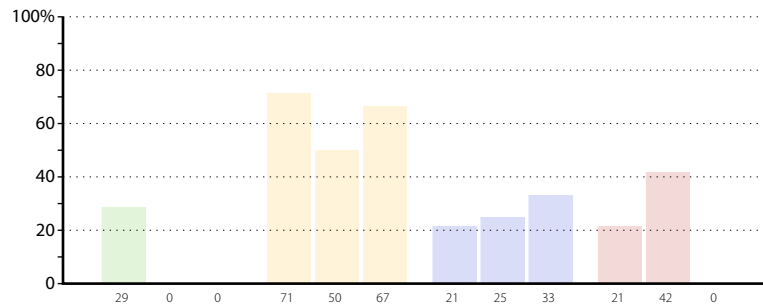
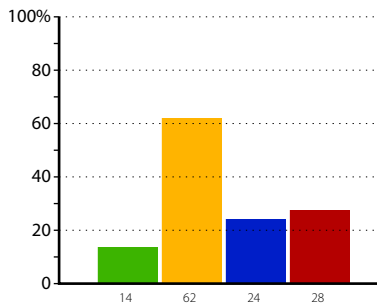
History



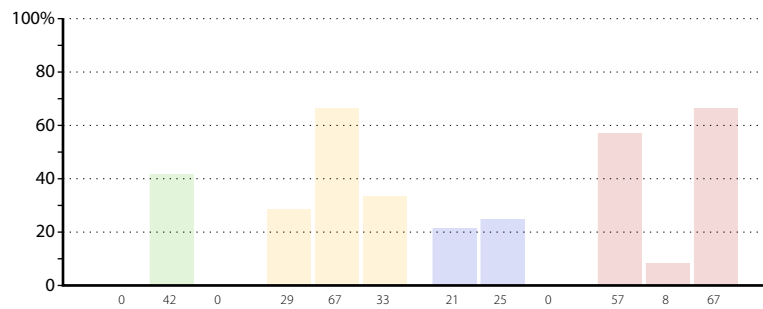
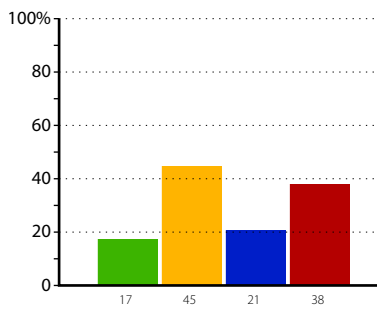
MFL



Arts

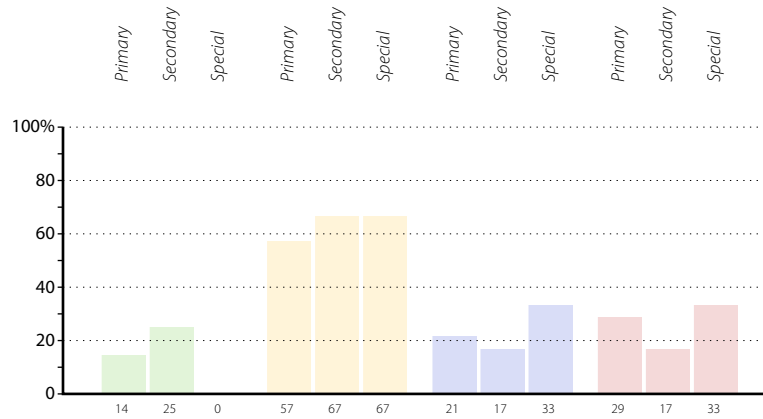
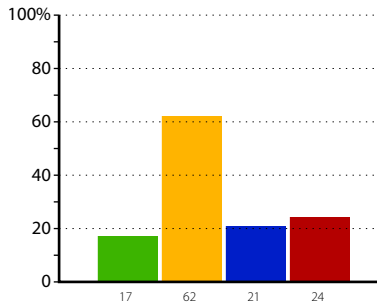


Performing Arts

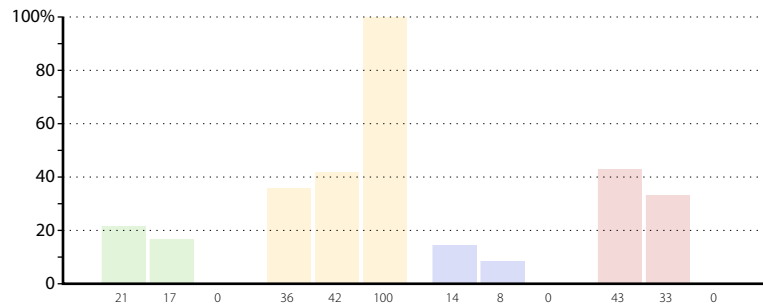
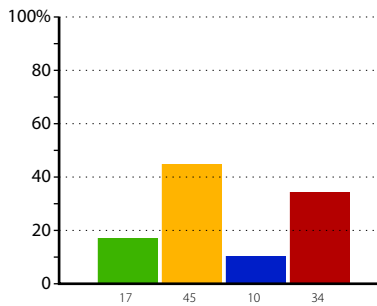


■ Strength you could share with others
 ■ Active priority for the next two years
 ■ Partnership welcomed
 ■ None of the above/not applicable

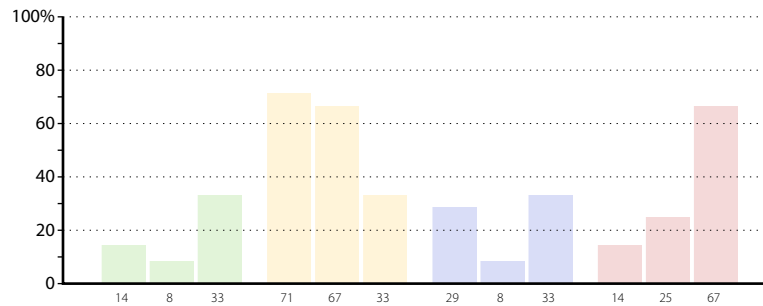
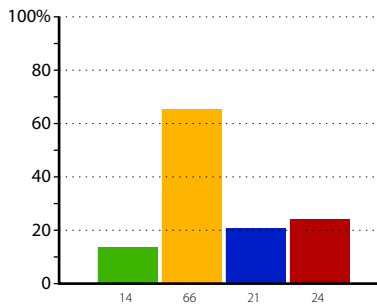
Music



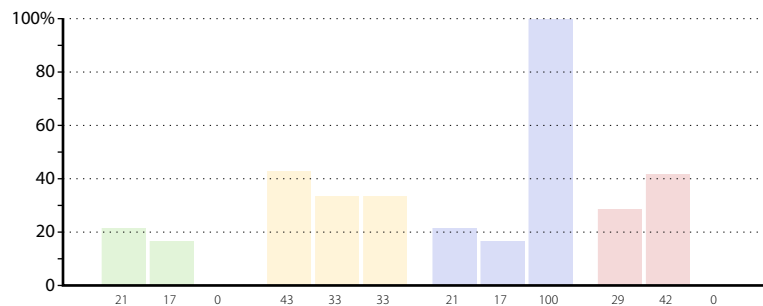
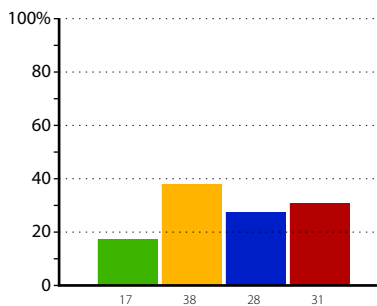
Religion and Worldview



Sport/PE

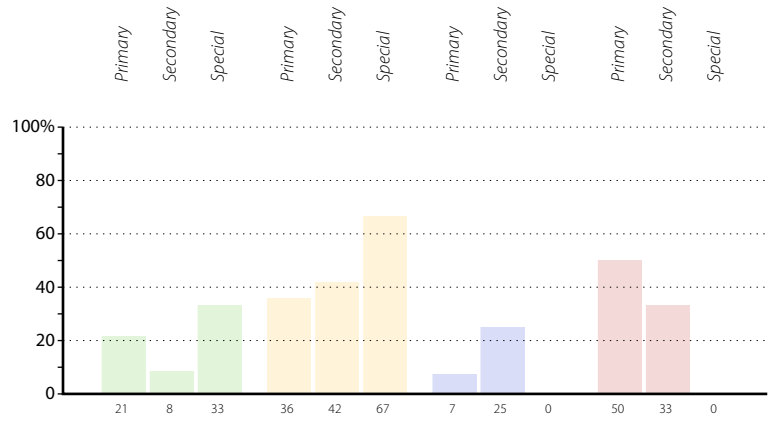
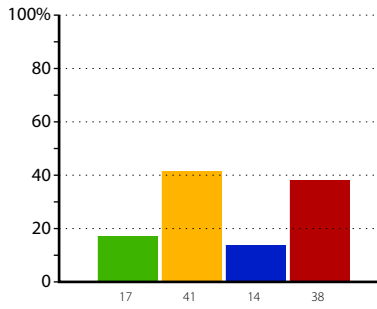


Citizenship & PSHE

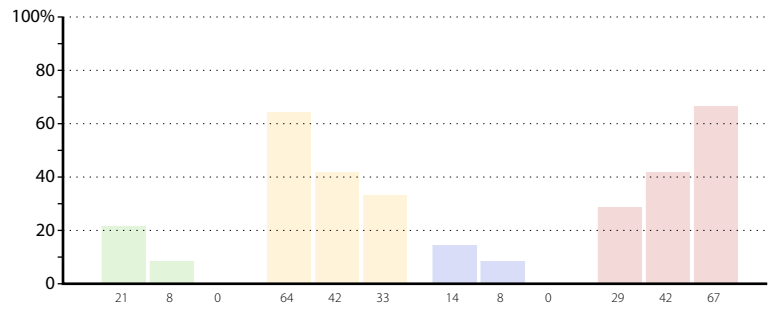
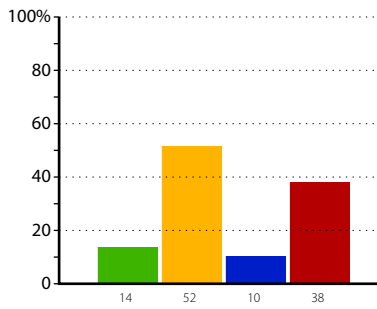


■ Strength you could share with others
 ■ Active priority for the next two years
 ■ Partnership welcomed
 ■ None of the above/not applicable

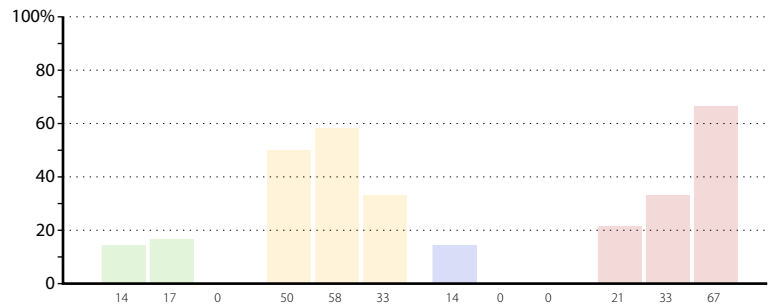
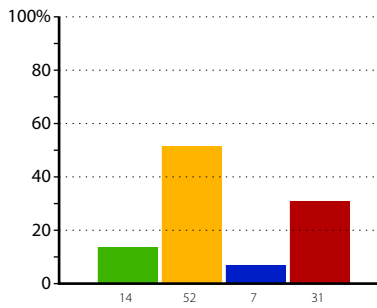
Early Years



Vocational Education



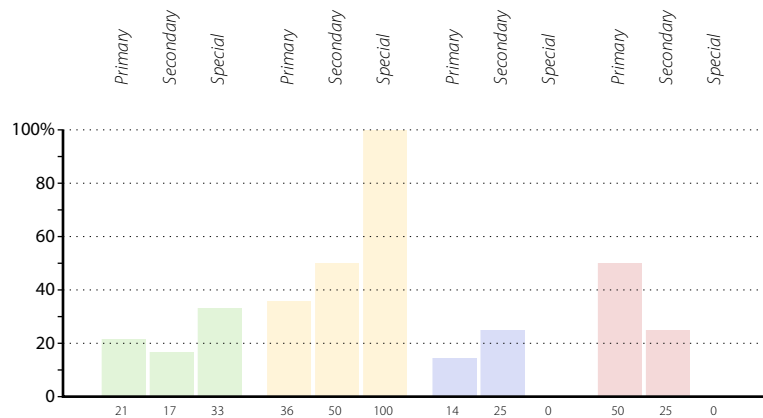
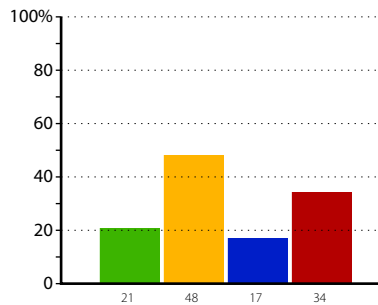
Extracurricular activities



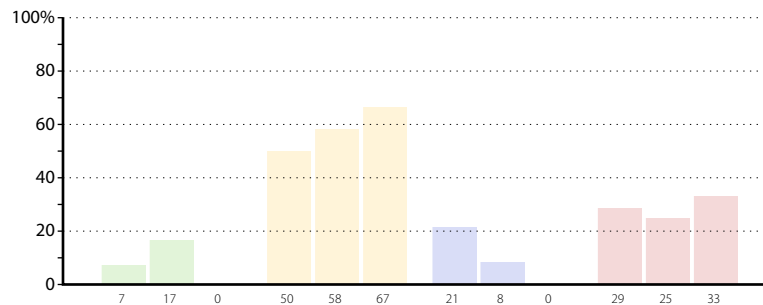
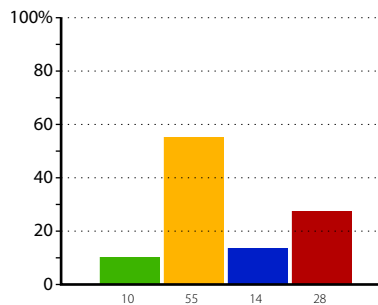
■ Strength you could share with others
 ■ Active priority for the next two years
 ■ Partnership welcomed
 ■ None of the above/not applicable

Learning environment

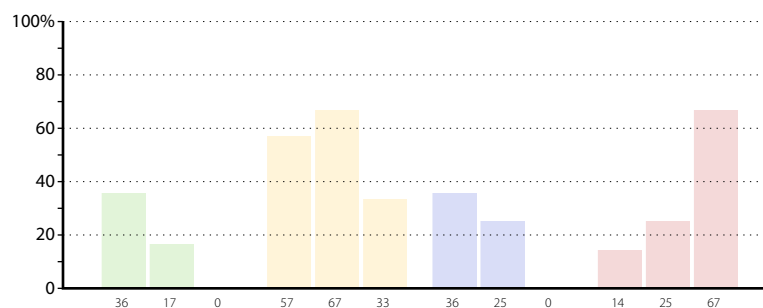
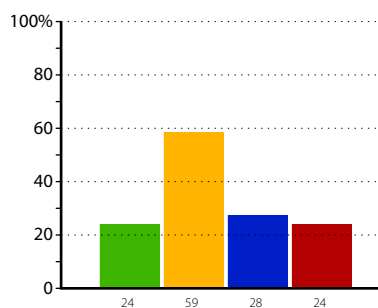
Behaviour for learning



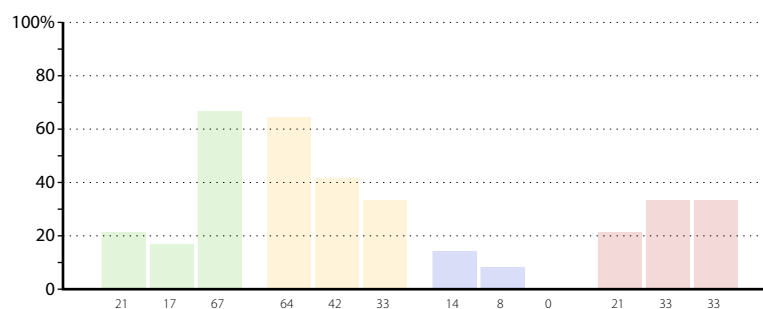
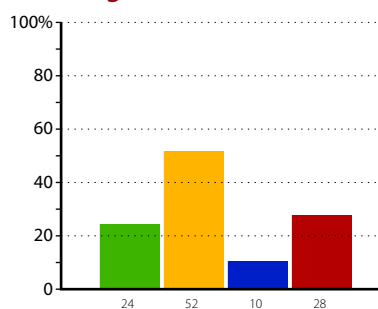
Planning and preparation for learning



Assessment (AfL and AoL)

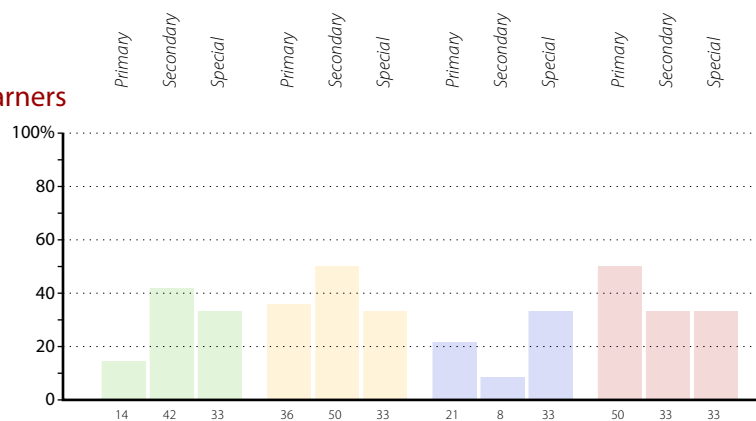
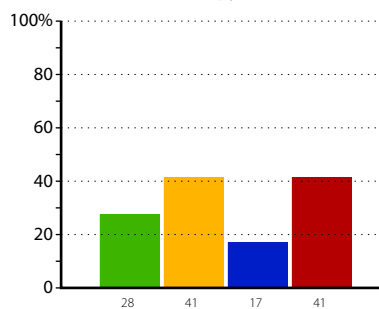


Marking and feedback

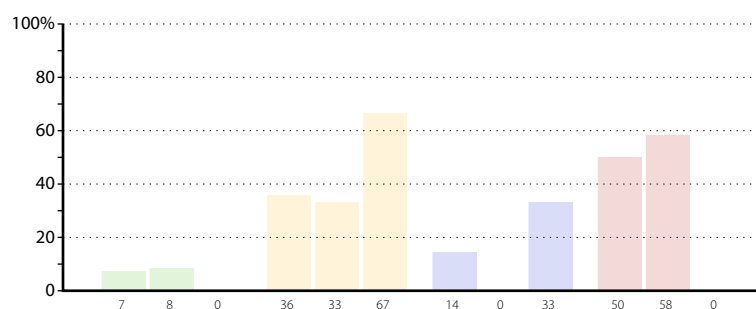
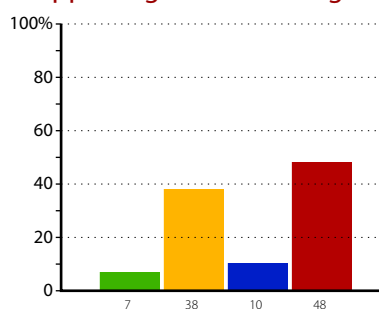


■ Strength you could share with others
 ■ Active priority for the next two years
 ■ Partnership welcomed
 ■ None of the above/not applicable

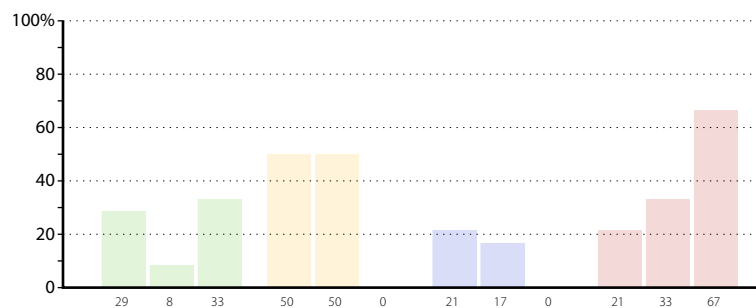
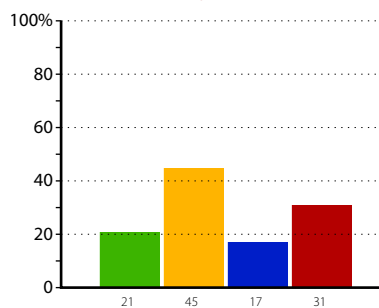
Use of technology to support learners



Supporting and stretching all learners

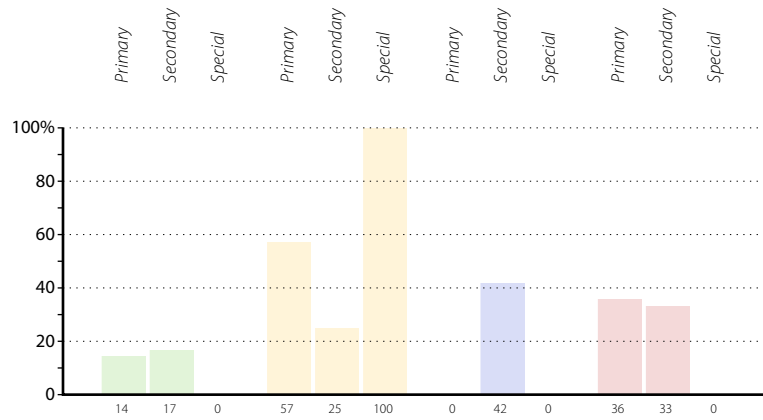
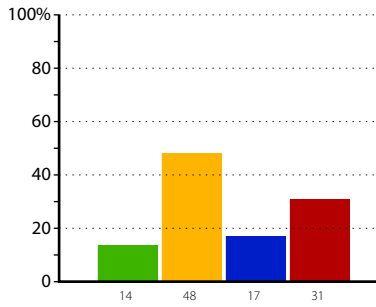


Use of teaching assistants

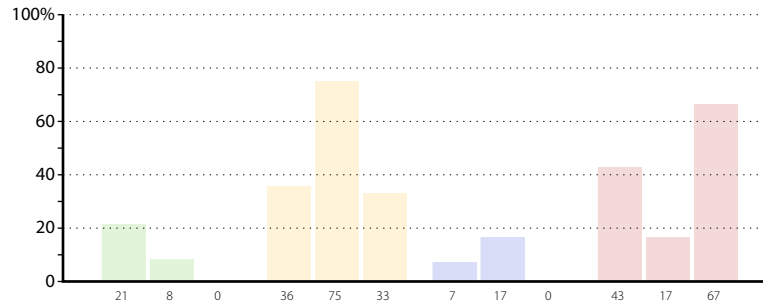
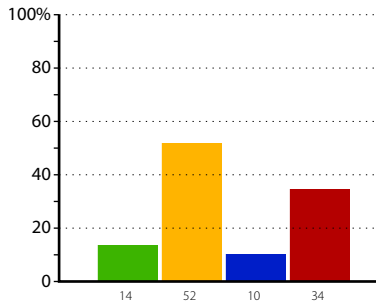


Pupils

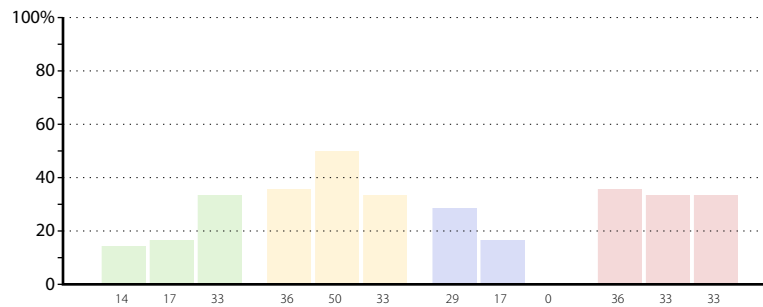
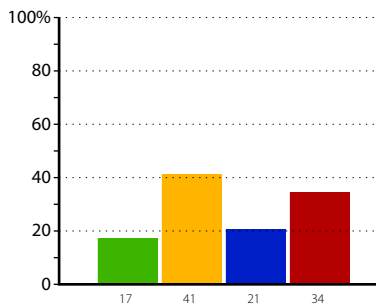
Personal development



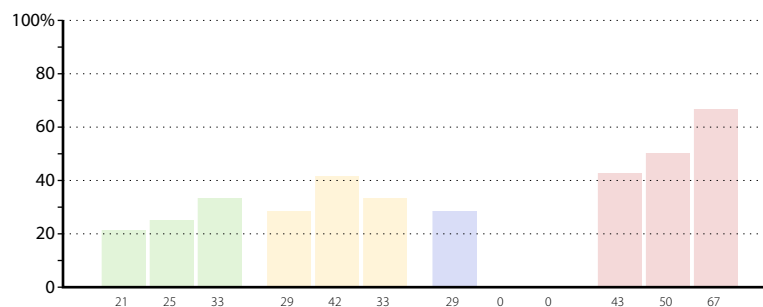
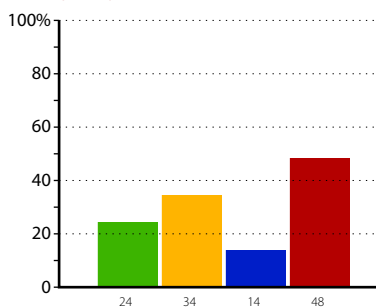
SEND provision



Pupil Premium provision

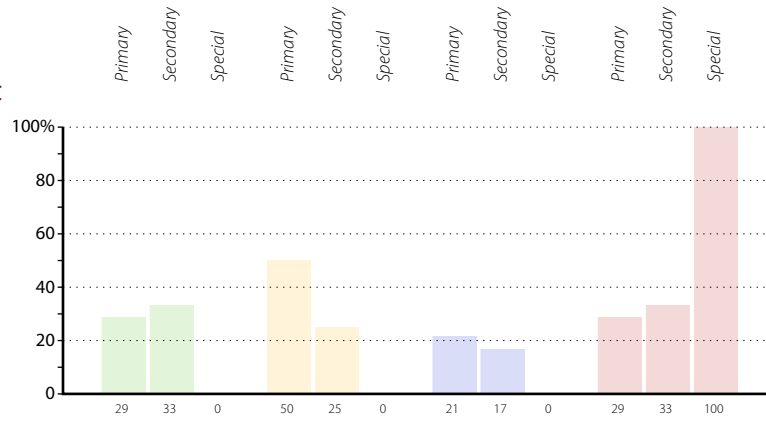
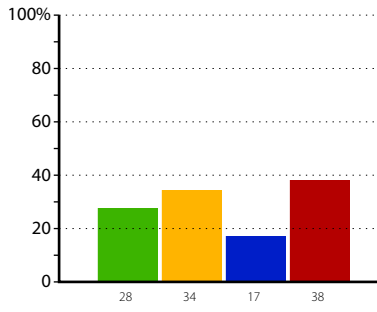


English as an additional language (EAL)

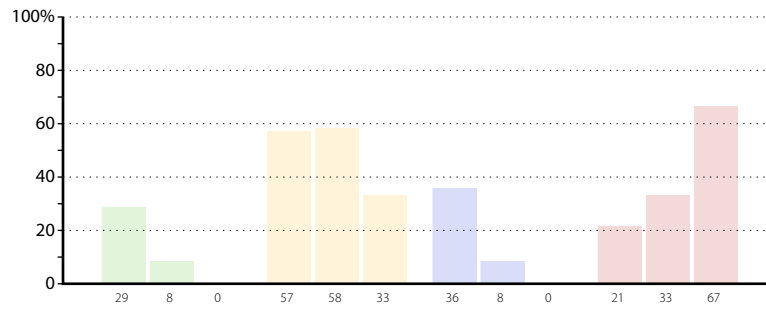
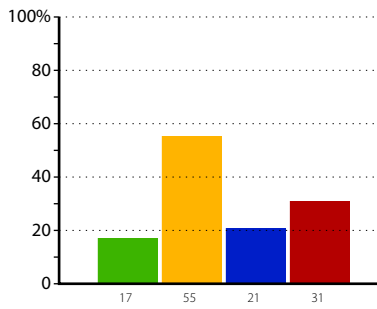


■ Strength you could share with others
 ■ Active priority for the next two years
 ■ Partnership welcomed
 ■ None of the above/not applicable

Pastoral and family engagement

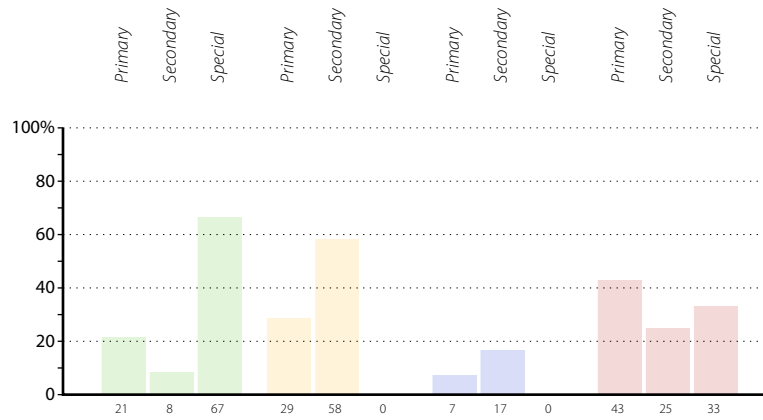
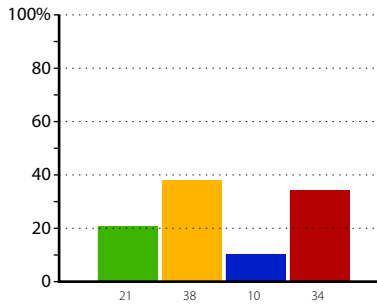


Attendance

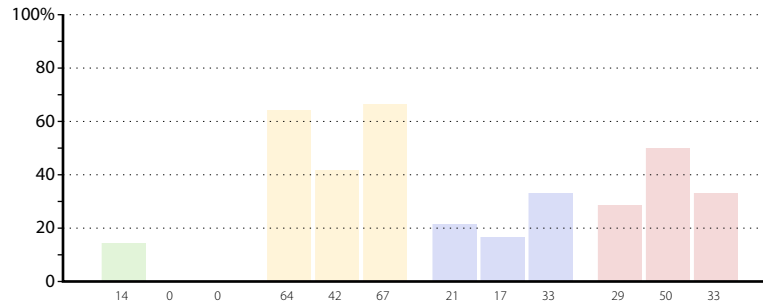
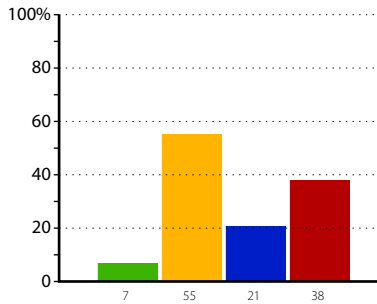


Leadership & management

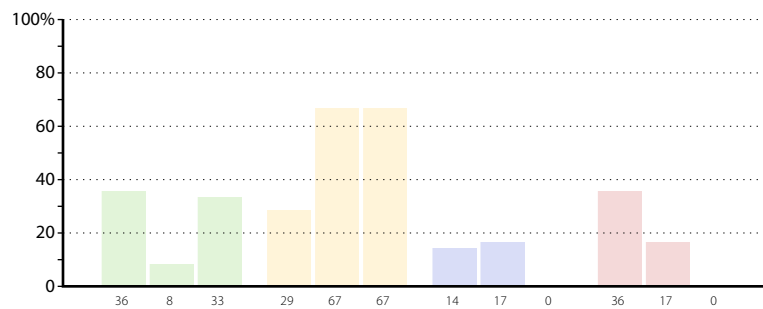
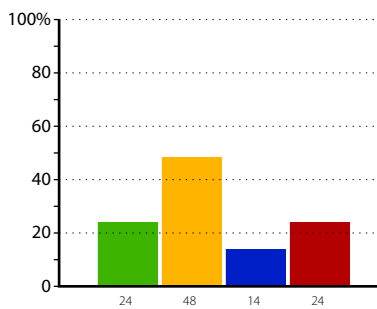
Monitoring & evaluation



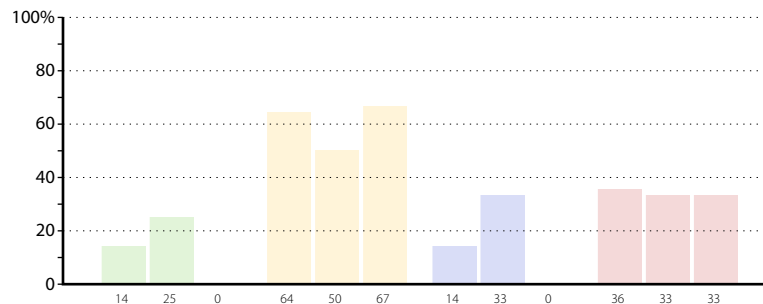
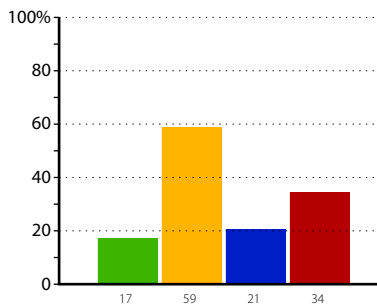
SEF completion



Governance

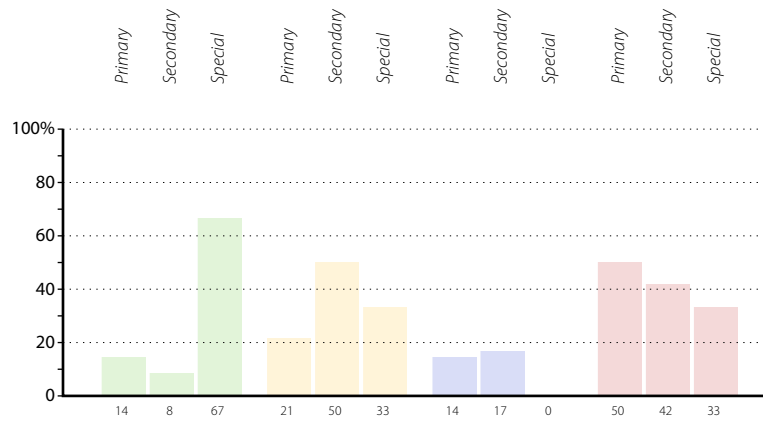
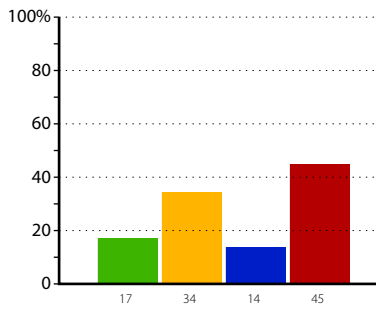


Leadership team development

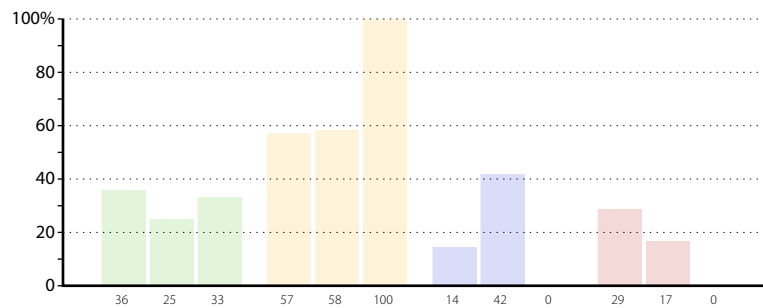
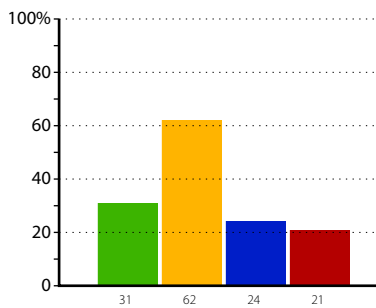


■ Strength you could share with others
 ■ Active priority for the next two years
 ■ Partnership welcomed
 ■ None of the above/not applicable

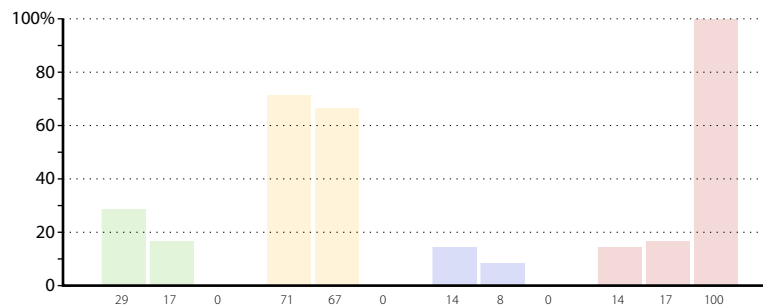
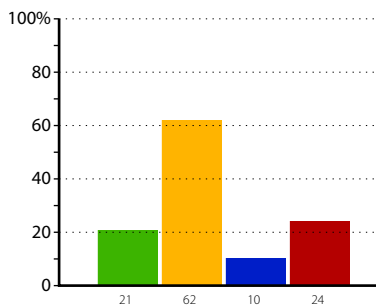
Staff retention & recruitment



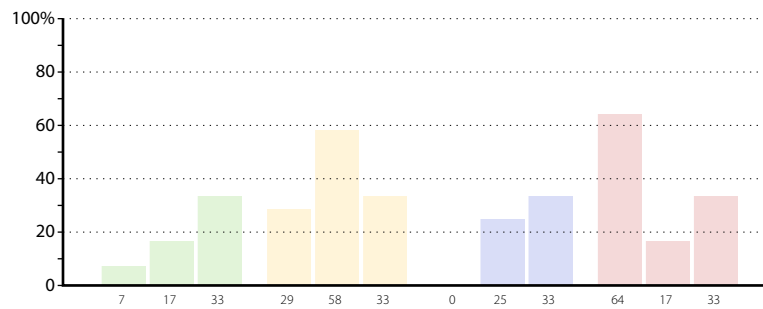
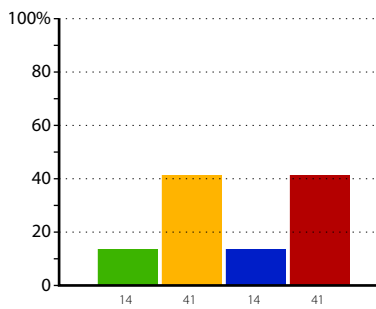
Performance management



Early Career Framework (ITT, NQT, RQT)

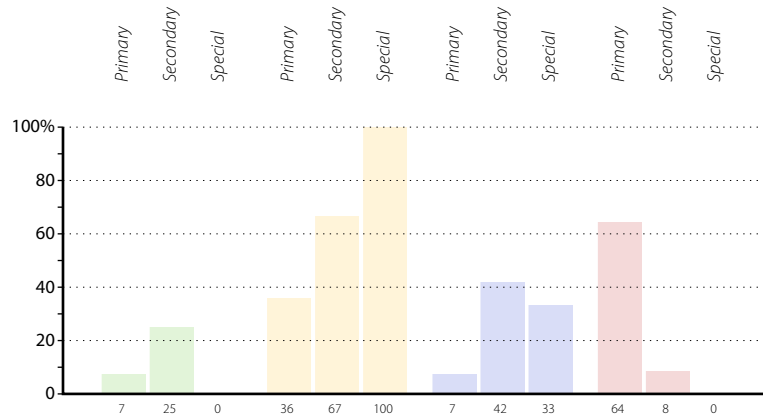
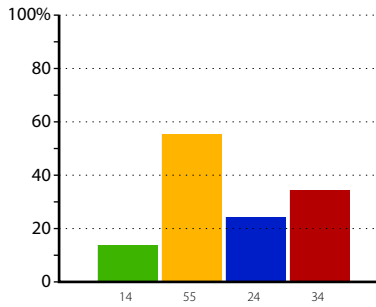


In-house CPD & training strategy

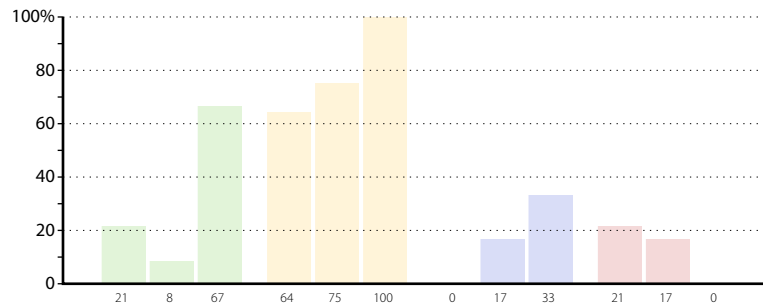
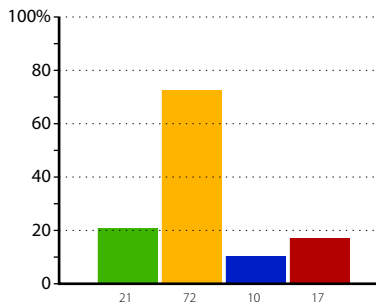


■ Strength you could share with others
 ■ Active priority for the next two years
 ■ Partnership welcomed
 ■ None of the above/not applicable

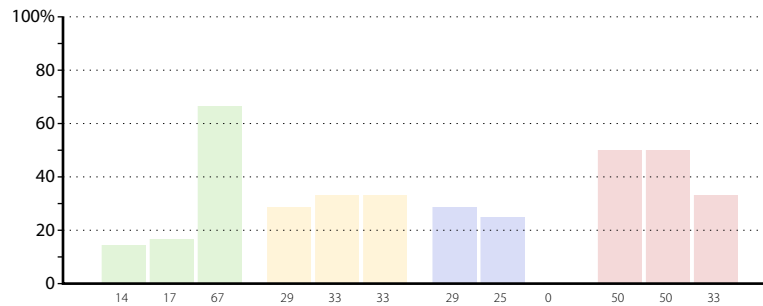
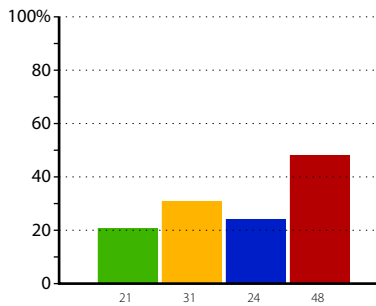
Support staff management



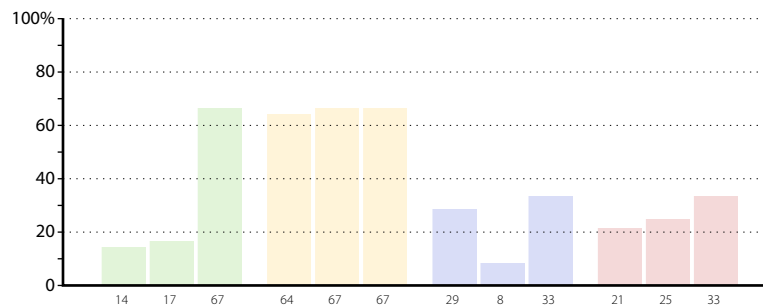
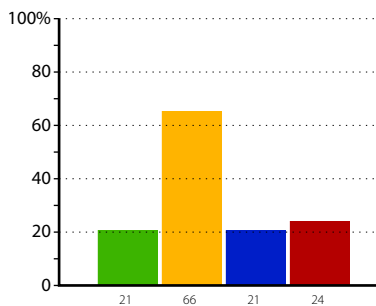
Subject leadership



Safeguarding



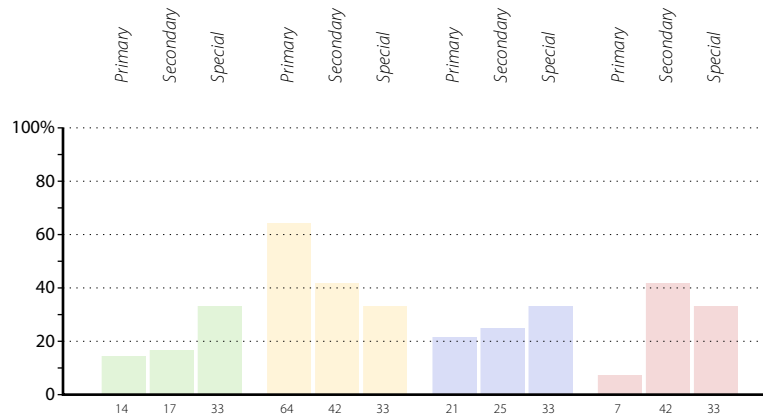
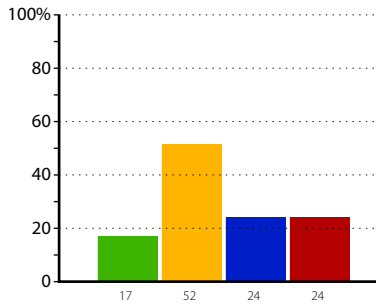
Careers



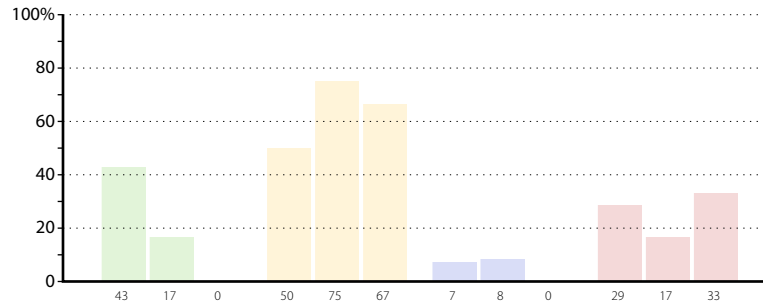
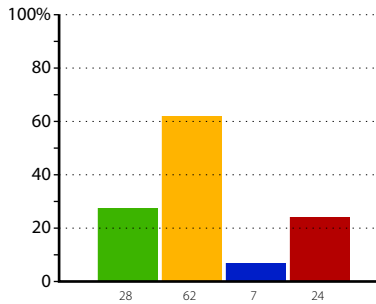
■ Strength you could share with others
 ■ Active priority for the next two years
 ■ Partnership welcomed
 ■ None of the above/not applicable

Infrastructure, administration & community issues

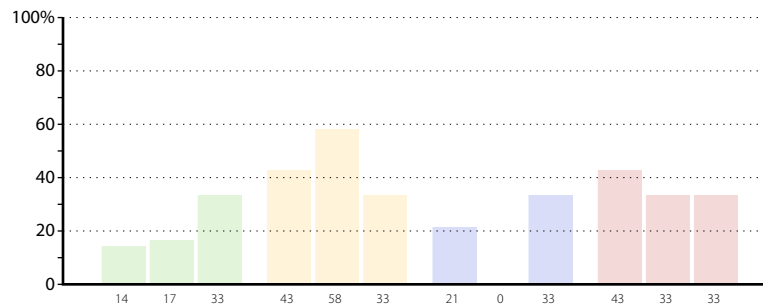
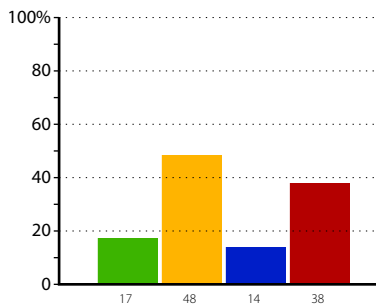
Administration services



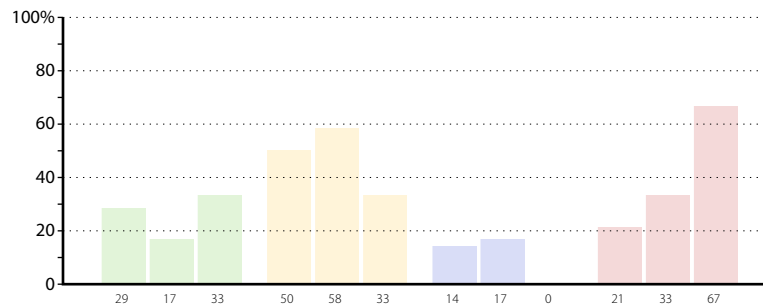
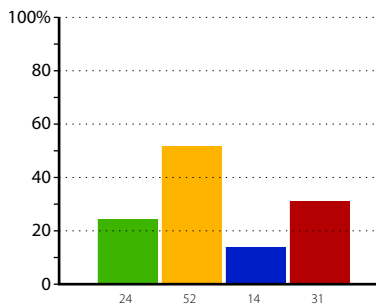
Information management



Financial management

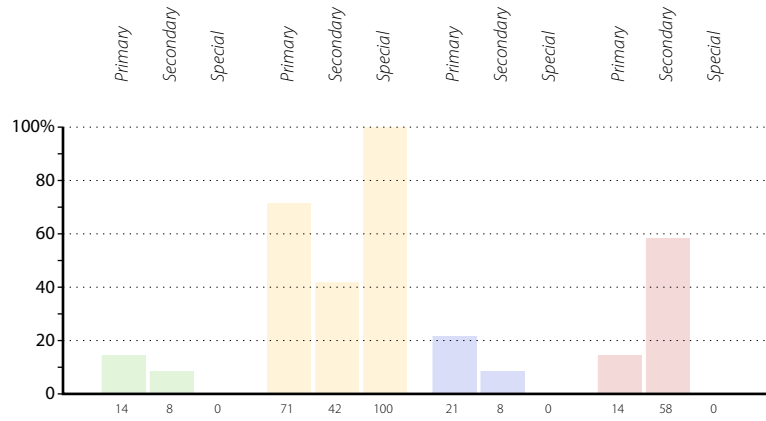
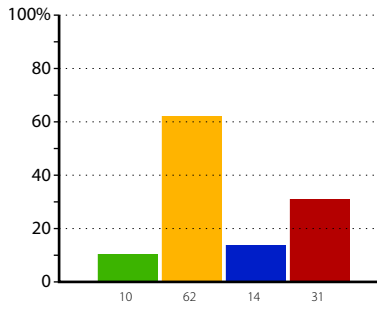


Catering management

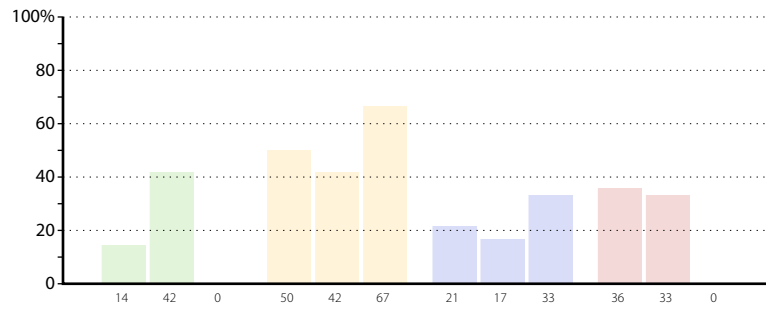
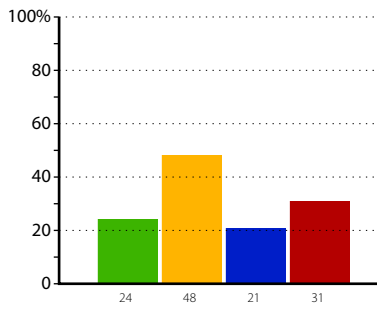


■ Strength you could share with others
 ■ Active priority for the next two years
 ■ Partnership welcomed
 ■ None of the above/not applicable

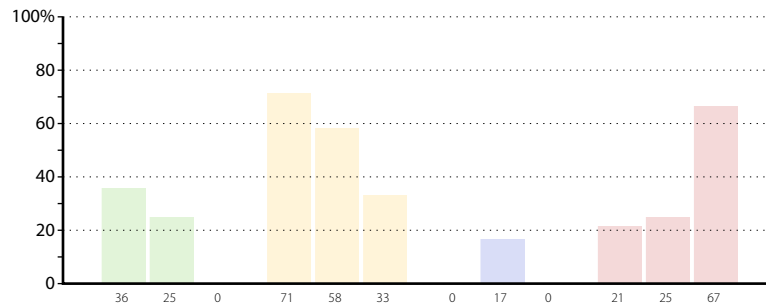
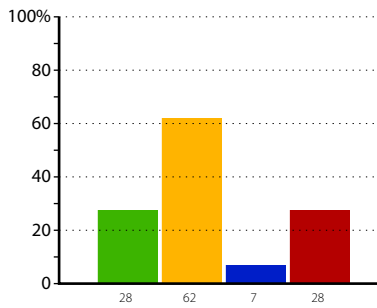
Buildings & site management



Community partnerships



Extended provision

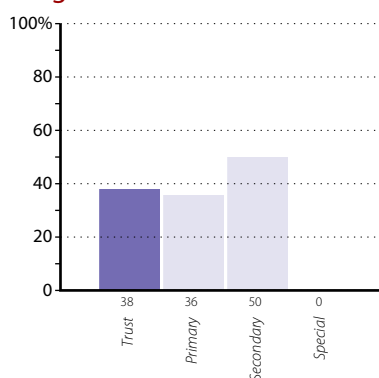


CPD priorities

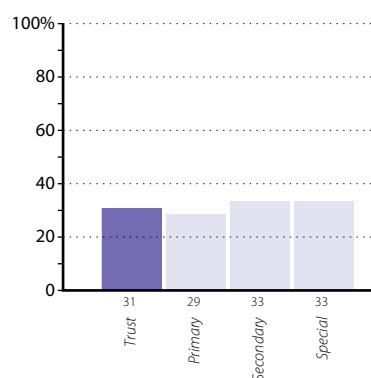
The graphs below and on pages 22 to 28 show, for all development issues, the percentage of schools in your trust, and in each phase, that thought the issue was a continuing professional development (CPD) priority.

Curriculum areas

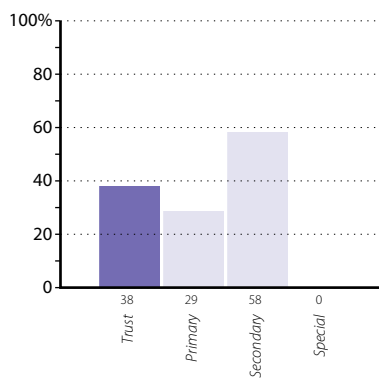
English



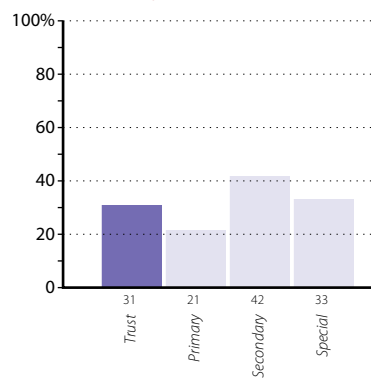
Maths



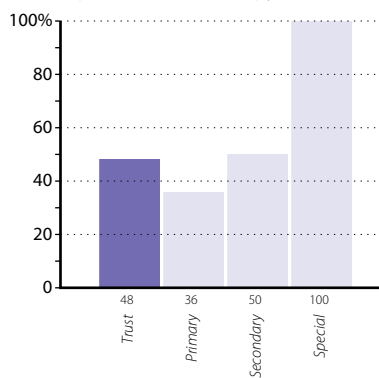
Science



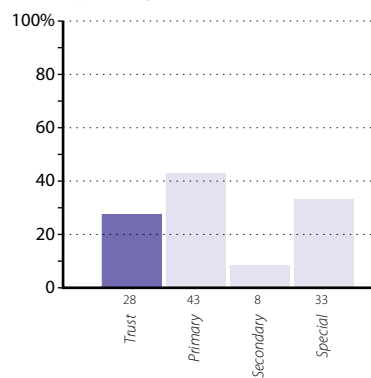
Computing



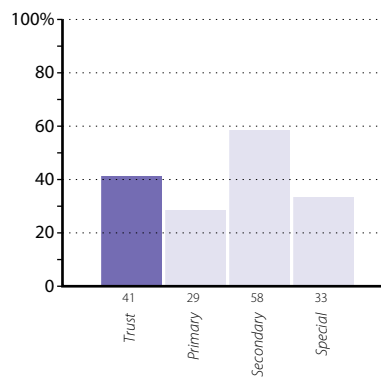
Design & Technology



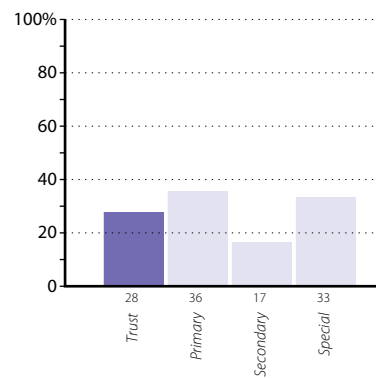
Geography



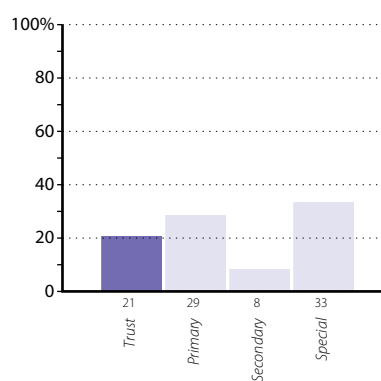
History



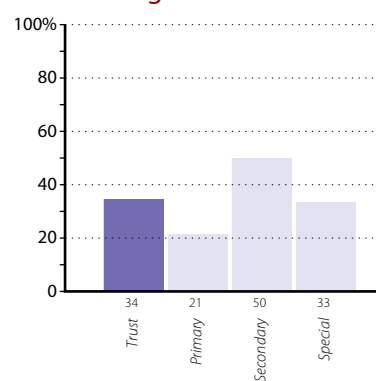
MFL



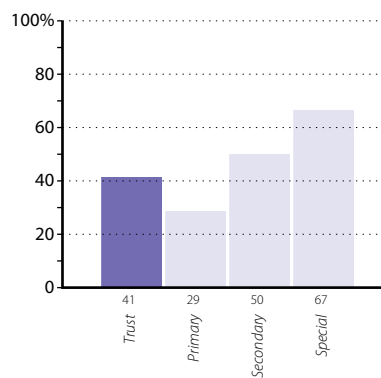
Arts



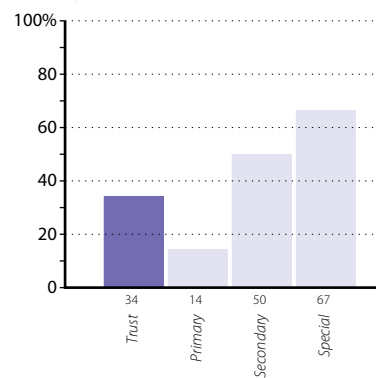
Performing Arts



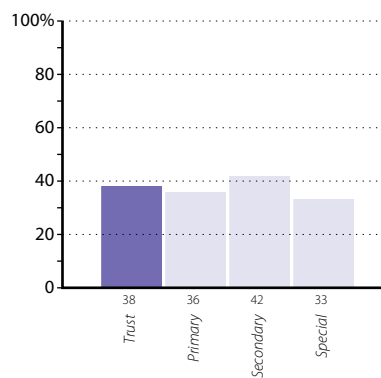
Music



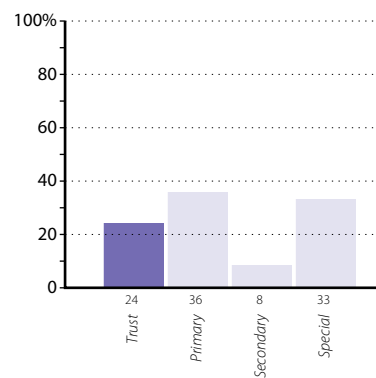
Religion and Worldview



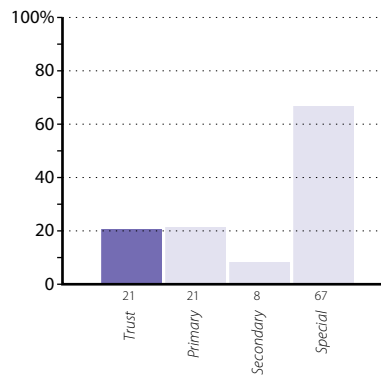
Sport/PE



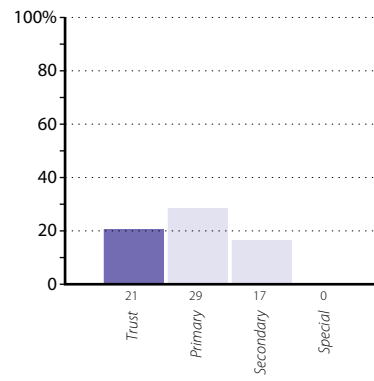
Citizenship & PSHE



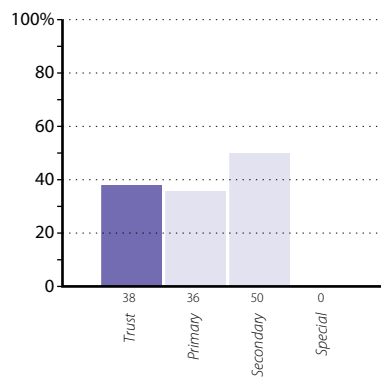
Early Years



Vocational Education

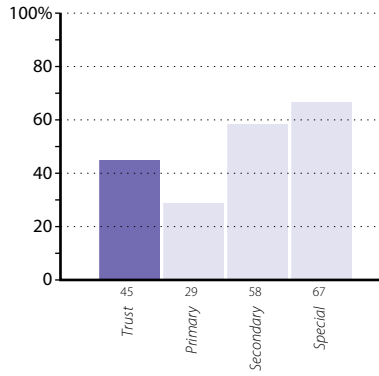


Extracurricular activities

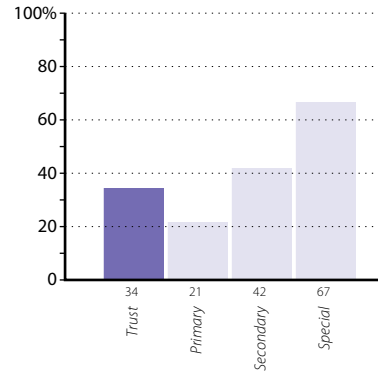


Learning environment

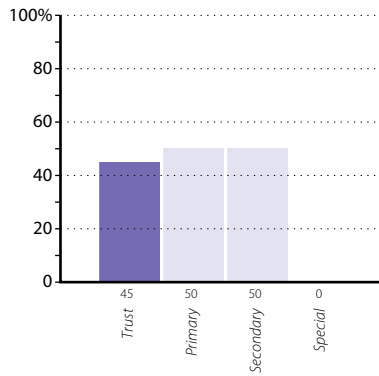
Behaviour for learning



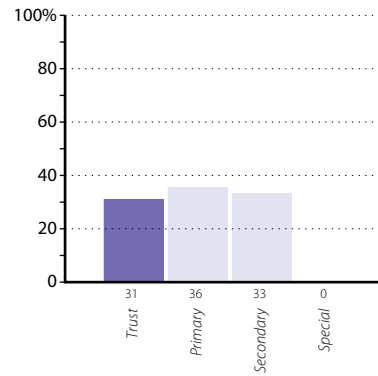
Planning and preparation for learning



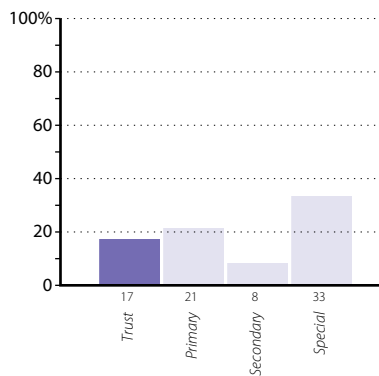
Assessment (AfL and AoL)



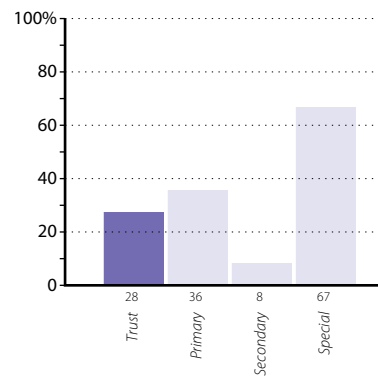
Marking and feedback



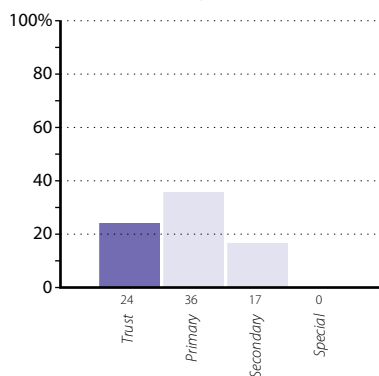
Use of technology to support learners



Supporting and stretching all learners

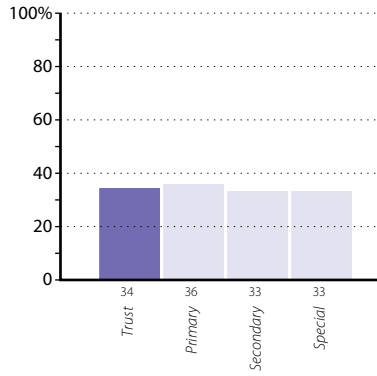


Use of teaching assistants

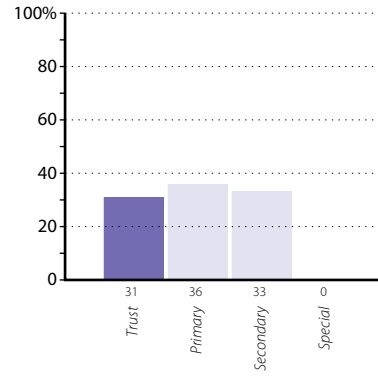


Pupils

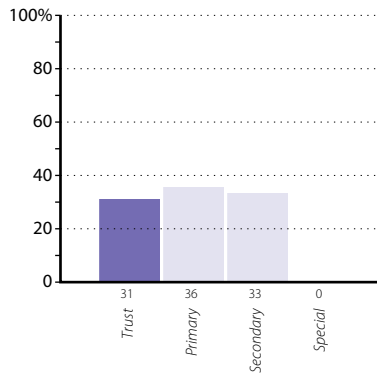
Personal development



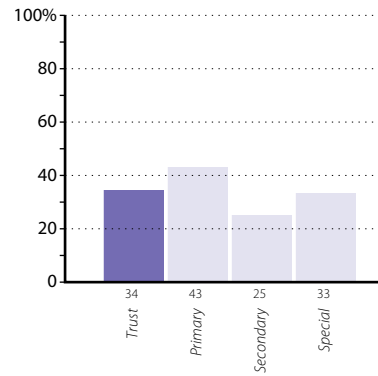
SEND provision



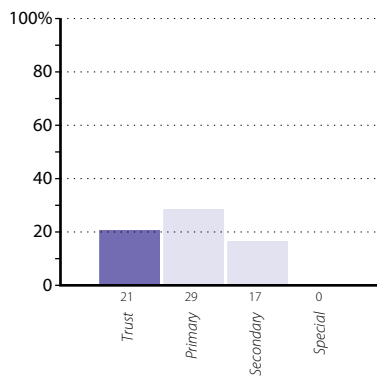
Pupil Premium provision



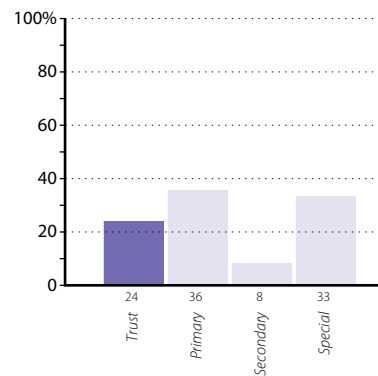
English as an additional language (EAL)



Pastoral and family engagement

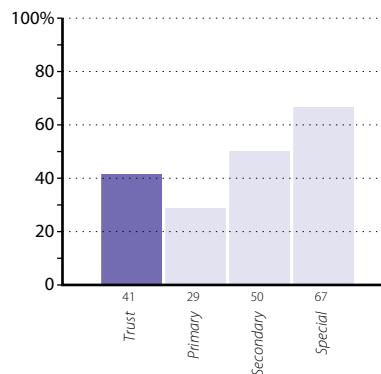


Attendance

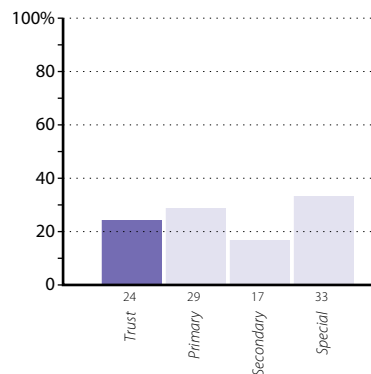


Leadership & management

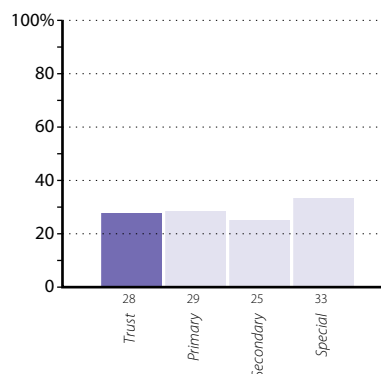
Monitoring & evaluation



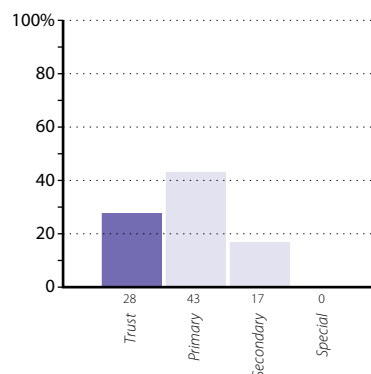
SEF completion



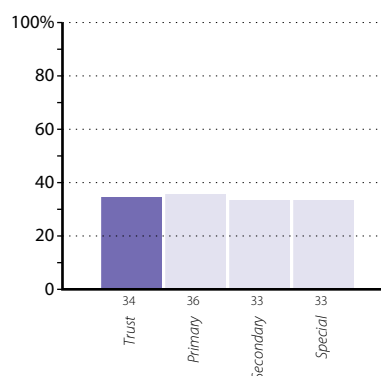
Governance



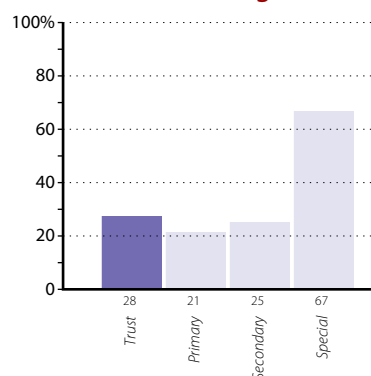
Leadership team development



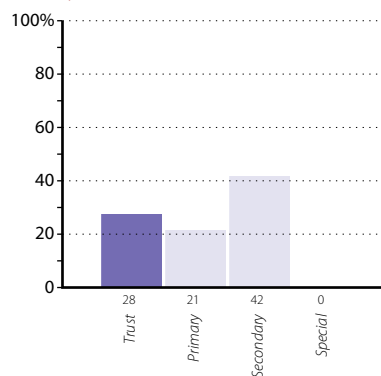
Staff retention & recruitment



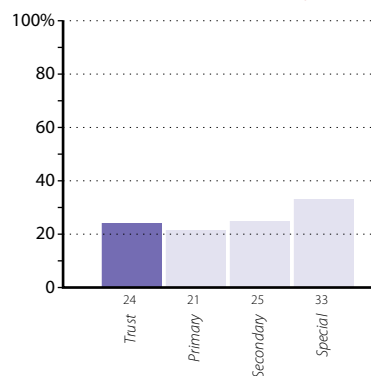
Performance management



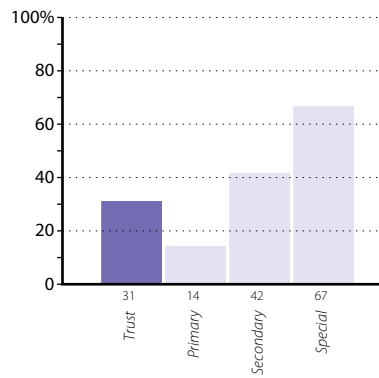
Early Career Framework (ITT, NQT, RQT)



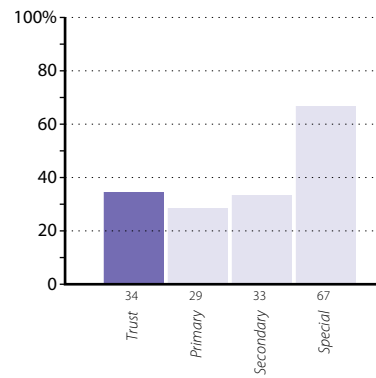
In-house CPD & training strategy



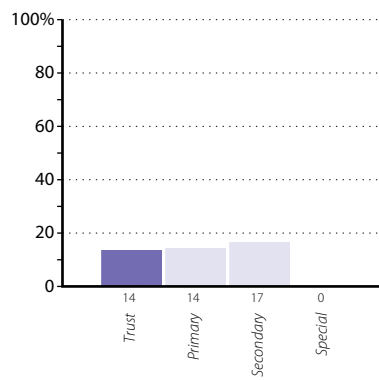
Support staff management



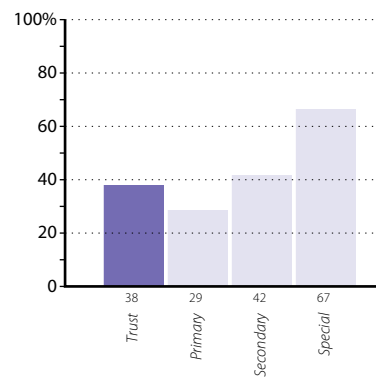
Subject leadership



Safeguarding

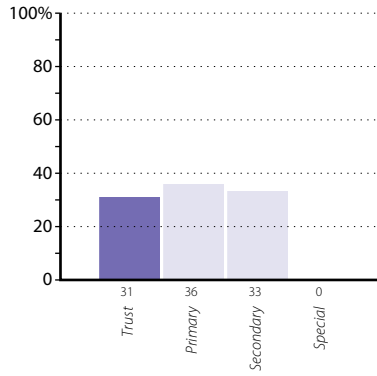


Careers

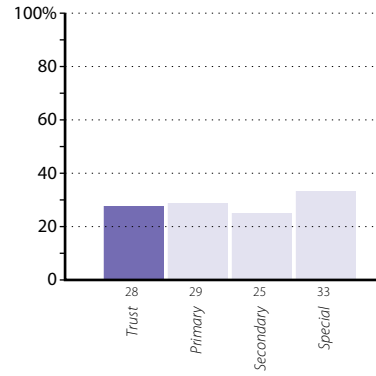


Infrastructure, administration & community issues

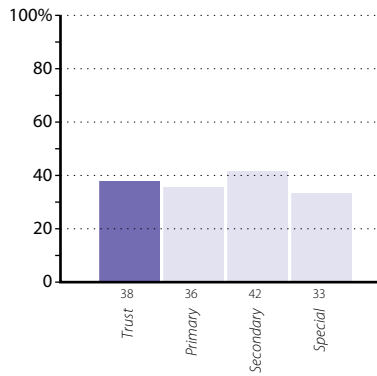
Administration services



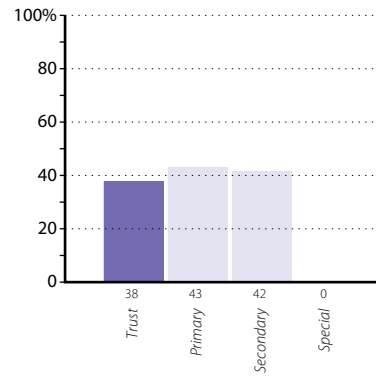
Information management



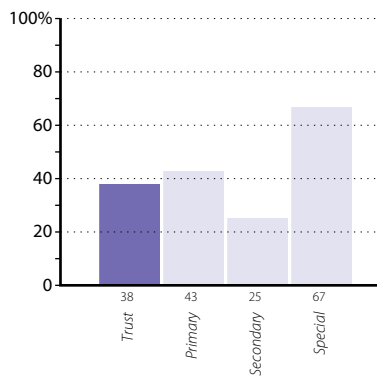
Financial management



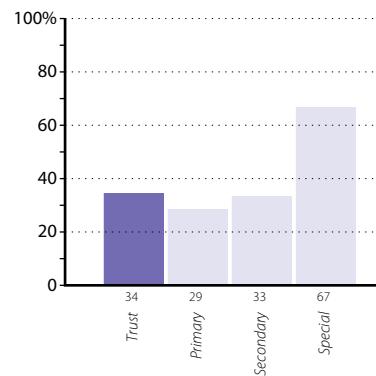
Catering management



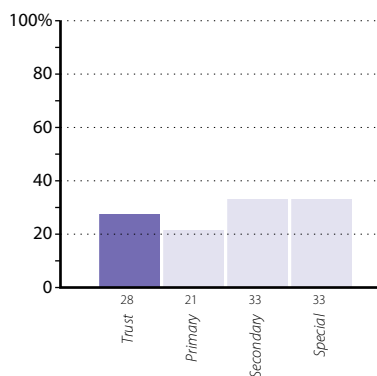
Buildings & site management



Community partnerships



Extended provision



Collaboration

The table on pages 30 to 42 shows any development issues where schools could be collaborating, based on their answers to the *Improvement Planner* questionnaire. You may wish to share this information with your schools in order that they can develop formal or informal pairing or group arrangements.

Curriculum areas

English

Strength you could share with others

Primary

Broadlands Primary School
St Joseph's C of E VA Primary School, Great Lakley

Secondary

Greendock School
Hayden School
Warby Community College
Wilsborough Comprehensive School

Special

No schools

Partnership welcomed

Primary

Brinxton CE Primary School
Siddington CE Primary School

Secondary

Shires School

Special

No schools

Maths

Strength you could share with others

Primary

Mickleton Science College
Rivendale Junior School
Siddington CE Primary School
Waringtree CE VA Primary School

Secondary

Barburn School
Eavers School

Special

No schools

Partnership welcomed

Primary

Siddington CE Primary School

Secondary

Harton Community College
Marston School
Shires School

Special

No schools

Science

Strength you could share with others

Primary

Waringtree CE VA Primary School

Secondary

Hayden School
Marston School

Special

No schools

Partnership welcomed

Primary

Brinxton CE Primary School
Cedar Way Primary School
Incheater Primary School
Rivendale Junior School
Waringtree CE VA Primary School
Westfield Primary School

Secondary

Barburn School
Greendock School
Springfield High School & Sixth Form College
Warby Community College

Special

Great Stopford School

Computing

Strength you could share with others

Primary

No schools

Secondary

Eavers School
Greendock School
Wilsborough Comprehensive School

Special

No schools

Partnership welcomed

Primary

Broadlands Primary School
Pingley Primary School
Waringtree CE VA Primary School

Secondary

Warby Community College
Wilsborough Comprehensive School

Special

Arbour Brooke School

Design & Technology

Strength you could share with others

Primary

Lakesley CE Primary School

Secondary

Swoughton Primary School

Special

No schools

Partnership welcomed

Primary

Mickleton Science College
Pingley Primary School

Secondary

Harton Community College

Special

No schools

Geography

Strength you could share with others

Primary

Cedar Way Primary School
Inchester Primary School
Oakfield Junior School
Pingley Primary School
Westfield Primary School

Secondary

Barburn School
Shires School
The King William School

Special

No schools

Partnership welcomed

Primary

No schools

Secondary

No schools

Special

No schools

History

Strength you could share with others

Primary

Brinxton CE Primary School

Secondary

Greendock School

Special

No schools

Partnership welcomed

Primary

Siddington CE Primary School

Secondary

Shires School

Special

No schools

MFL

Strength you could share with others

Primary

Broadlands Primary School
Oakfield Junior School
Rivendale Junior School
Westfield Primary School

Secondary

Barburn School
Eavers School
Shires School

Special

No schools

Partnership welcomed

Primary

Broadlands Primary School
Cedar Way Primary School
Inchester Primary School

Secondary

No schools

Special

Arbour Brooke School

Arts

Strength you could share with others

Primary

Inchester Primary School
Oakfield Junior School
St Joseph's C of E VA Primary School, Great Lakley
Waringtree CE VA Primary School

Secondary

No schools

Special

No schools

Partnership welcomed

Primary

Lakesley CE Primary School
Pingley Primary School
Waringtree CE VA Primary School

Secondary

Hayden School
Marston School
Springfield High School & Sixth Form College

Special

Great Stopford School

Performing Arts

Strength you could share with others

Primary

No schools

Secondary

Eavers School
Harton Community College
Hayden School
Shires School
Swoughton Primary School

Special

No schools

Partnership welcomed

Primary

Rivendale Junior School
Teling Primary School
Westfield Primary School

Secondary

The King William School
Warby Community College
Wilsborough Comprehensive School

Special

No schools

Music

Strength you could share with others

Primary

Brinxton CE Primary School
Broadlands Primary School

Secondary

Marston School
Springfield High School & Sixth Form College
Warby Community College

Special

No schools

Partnership welcomed

Primary

Mickleton Science College
Siddington CE Primary School
Waringtree CE VA Primary School

Secondary

Eavers School
Swoughton Primary School

Special

Great Stopford School

Religion and Worldview

Strength you could share with others

Primary

Brinxton CE Primary School
Inchester Primary School
Oakfield Junior School

Secondary

Eavers School
Wilsborough Comprehensive School

Special

No schools

Partnership welcomed

Primary

Rivendale Junior School
Siddington CE Primary School

Secondary

Shires School

Special

No schools

Sport/PE

Strength you could share with others

Primary

Rivendale Junior School
Westfield Primary School

Secondary

Shires School

Special

Arbour Brooke School

Partnership welcomed

Primary

Broadlands Primary School
Cedar Way Primary School
Inchester Primary School
Pingley Primary School

Secondary

Swoughton Primary School

Special

Arbour Brooke School

Citizenship & PSHE

Strength you could share with others

Primary

Lakesley CE Primary School
Siddington CE Primary School
Waringtree CE VA Primary School

Secondary

Swoughton Primary School
The King William School

Special

No schools

Partnership welcomed

Primary

Cedar Way Primary School
Mickleton Science College
St Joseph's C of E VA Primary School, Great Lakley

Secondary

Shires School
Wilsborough Comprehensive School

Special

Arbour Brooke School
Great Stopford School
Mullins School

Early Years

Strength you could share with others

Primary

Cedar Way Primary School
Oakfield Junior School
St Joseph's C of E VA Primary School, Great Lakley

Secondary

The King William School

Special

Arbour Brooke School

Partnership welcomed

Primary

Lakesley CE Primary School

Secondary

Barburn School
Eavers School
Shires School

Special

No schools

Vocational Education

Strength you could share with others

Primary

Mickleton Science College
Pingley Primary School
Telling Primary School

Secondary

Shires School

Special

No schools

Partnership welcomed

Primary

Lakesley CE Primary School
Pingley Primary School

Secondary

Hayden School

Special

No schools

Extracurricular activities

Strength you could share with others

Primary

Inchester Primary School
Pingley Primary School

Secondary

Eavers School
Swoughton Primary School

Special

No schools

Partnership welcomed

Primary

Brinxton CE Primary School
Broadlands Primary School

Secondary

No schools

Special

No schools

Learning environment

Behaviour for learning

Strength you could share with others

Primary

Oakfield Junior School
Siddington CE Primary School
Teling Primary School

Secondary

Hayden School
Marston School

Special

Great Stopford School

Partnership welcomed

Primary

Oakfield Junior School
Rivendale Junior School

Secondary

Eavers School
Harton Community College
Shires School

Special

No schools

Planning and preparation for learning

Strength you could share with others

Primary

Broadlands Primary School

Secondary

Harton Community College
Hayden School

Special

No schools

Partnership welcomed

Primary

Brinxton CE Primary School
Teling Primary School
Waringtree CE VA Primary School

Secondary

Greendock School

Special

No schools

Assessment (AfL and AoL)

Strength you could share with others

Primary

Brinxton CE Primary School
Broadlands Primary School
Rivendale Junior School
St Joseph's C of E VA Primary School, Great Lakley
Westfield Primary School

Secondary

Barburn School
Marston School

Special

No schools

Partnership welcomed

Primary

Broadlands Primary School
Mickleton Science College
Siddington CE Primary School
Waringtree CE VA Primary School
Westfield Primary School

Secondary

Greendock School
Hayden School
Swoughton Primary School

Special

No schools

Marking and feedback

Strength you could share with others

Primary

Brinxton CE Primary School
Cedar Way Primary School
St Joseph's C of E VA Primary School, Great Lakley

Secondary

Harton Community College
Warby Community College

Special

Arbour Brooke School
Great Stopford School

Partnership welcomed

Primary

Brinxton CE Primary School
Waringtree CE VA Primary School

Secondary

Hayden School

Special

No schools

Use of technology to support learners

Strength you could share with others

Primary

Brinxton CE Primary School
Westfield Primary School

Secondary

Eavers School
Hayden School
Shires School
The King William School
Wilsborough Comprehensive School

Special

Arbour Brooke School

Partnership welcomed

Primary

Cedar Way Primary School
Lakesley CE Primary School
Teling Primary School

Secondary

Swoughton Primary School

Special

Great Stopford School

Supporting and stretching all learners

Strength you could share with others

Primary

Siddington CE Primary School

Secondary

The King William School

Special

No schools

Partnership welcomed

Primary

Waringtree CE VA Primary School
Westfield Primary School

Secondary

No schools

Special

Mullins School

Use of teaching assistants

Strength you could share with others

Primary

Brinxton CE Primary School
Siddington CE Primary School
Telling Primary School
Westfield Primary School

Secondary

Eavers School

Special

Arbour Brooke School

Partnership welcomed

Primary

Cedar Way Primary School
Mickleton Science College
Westfield Primary School

Secondary

Barburn School
Harton Community College

Special

No schools

Pupils

Personal development

Strength you could share with others

Primary

Broadlands Primary School
Cedar Way Primary School

Secondary

Marston School
Shires School

Special

No schools

Partnership welcomed

Primary

No schools

Secondary

Hayden School
Marston School
Shires School
Springfield High School & Sixth Form College
Swoughton Primary School

Special

No schools

SEND provision

Strength you could share with others

Primary

Brinxton CE Primary School
Lakesley CE Primary School
Siddington CE Primary School

Secondary

Warby Community College

Special

No schools

Partnership welcomed

Primary

Lakesley CE Primary School

Secondary

The King William School
Warby Community College

Special

No schools

Pupil Premium provision

Strength you could share with others

Primary

Mickleton Science College
Siddington CE Primary School

Secondary

Shires School
Swoughton Primary School

Special

Arbour Brooke School

Partnership welcomed

Primary

Lakesley CE Primary School
Oakfield Junior School
Pingley Primary School
St Joseph's C of E VA Primary School, Great Lakley

Secondary

Hayden School
Swoughton Primary School

Special

No schools

English as an additional language (EAL)

Strength you could share with others

Primary

Brinxton CE Primary School
Rivendale Junior School
Teling Primary School

Secondary

Barburn School
Shires School
Warby Community College

Special

Great Stopford School

Partnership welcomed

Primary

Broadlands Primary School
Mickleton Science College
Pingley Primary School
Siddington CE Primary School

Secondary

No schools

Special

No schools

Pastoral and family engagement

Strength you could share with others

Primary

Inchester Primary School
Siddington CE Primary School
Teling Primary School
Westfield Primary School

Secondary

Greendock School
Harton Community College
Marston School
Swoughton Primary School

Special

No schools

Partnership welcomed

Primary

Inchester Primary School
Lakesley CE Primary School
Pingley Primary School

Secondary

Shires School
The King William School

Special

No schools

Attendance

Strength you could share with others

Primary

Lakesley CE Primary School
Mickleton Science College
Oakfield Junior School
Pingley Primary School

Secondary

Hayden School

Special

No schools

Partnership welcomed

Primary

Broadlands Primary School
Inchester Primary School
Oakfield Junior School
Teling Primary School
Westfield Primary School

Secondary

Barburn School

Special

No schools

Leadership & management

Monitoring & evaluation

Strength you could share with others

Primary

Broadlands Primary School
Oakfield Junior School
Waringtree CE VA Primary School

Secondary

Hayden School

Special

Arbour Brooke School
Great Stopford School

Partnership welcomed

Primary

Cedar Way Primary School

Secondary

Springfield High School & Sixth Form College
Swoughton Primary School

Special

No schools

SEF completion

Strength you could share with others

Primary

Brinxton CE Primary School
Oakfield Junior School

Secondary

No schools

Special

No schools

Partnership welcomed

Primary

Rivendale Junior School
Siddington CE Primary School
Westfield Primary School

Secondary

Greendock School
Swoughton Primary School

Special

Great Stopford School

Governance

Strength you could share with others

Primary

Broadlands Primary School
Lakesley CE Primary School
Mickleton Science College
Pingley Primary School
St Joseph's C of E VA Primary School, Great Lakley

Secondary

Hayden School

Special

Arbour Brooke School

Partnership welcomed

Primary

Pingley Primary School
Waringtree CE VA Primary School

Secondary

The King William School
Warby Community College

Special

No schools

Leadership team development

Strength you could share with others

Primary

Pingley Primary School
Rivendale Junior School

Secondary

Marston School
The King William School
Warby Community College

Special

No schools

Partnership welcomed

Primary

Broadlands Primary School
Westfield Primary School

Secondary

Greendock School
Marston School
Warby Community College
Wilsborough Comprehensive School

Special

No schools

Staff retention & recruitment

Strength you could share with others

Primary

Broadlands Primary School
Pingley Primary School

Secondary

Warby Community College

Special

Great Stopford School
Mullins School

Partnership welcomed

Primary

Rivendale Junior School
Westfield Primary School

Secondary

Springfield High School & Sixth Form College
Swoughton Primary School

Special

No schools

Performance management

Strength you could share with others

Primary

Inchester Primary School
Oakfield Junior School
Pingley Primary School
Rivendale Junior School
Siddington CE Primary School

Secondary

Harton Community College
Shires School
Swoughton Primary School

Special

Great Stopford School

Partnership welcomed

Primary

Pingley Primary School
Telling Primary School

Secondary

Shires School
Springfield High School & Sixth Form College
Swoughton Primary School
Warby Community College
Wilsborough Comprehensive School

Special

No schools

Early Career Framework (ITT, NQT, RQT)

Strength you could share with others

Primary

Brinxton CE Primary School
Inchester Primary School
St Joseph's C of E VA Primary School, Great Lakley
Waringtree CE VA Primary School

Secondary

Springfield High School & Sixth Form College
Warby Community College

Special

No schools

Partnership welcomed

Primary

Brinxton CE Primary School
Broadlands Primary School

Secondary

Eavers School

Special

No schools

In-house CPD & training strategy

Strength you could share with others

Primary

Telling Primary School

Secondary

Shires School
Warby Community College

Special

Mullins School

Partnership welcomed

Primary

No schools

Secondary

Barburn School
Eavers School
Swoughton Primary School

Special

Arbour Brooke School

Support staff management

Strength you could share with others

Primary

St Joseph's C of E VA Primary School, Great Lakley

Secondary

Harton Community College
Marston School
Shires School

Special

No schools

Partnership welcomed

Primary

St Joseph's C of E VA Primary School, Great Lakley

Secondary

Eavers School
Greendock School
Springfield High School & Sixth Form College
Swoughton Primary School
The King William School

Special

Arbour Brooke School

Subject leadership

Strength you could share with others

Primary

Inchester Primary School
Siddington CE Primary School
Westfield Primary School

Secondary

Springfield High School & Sixth Form College

Special

Great Stopford School
Mullins School

Partnership welcomed

Primary

No schools

Secondary

Barburn School
Warby Community College

Special

Great Stopford School

Safeguarding

Strength you could share with others

Primary

Brinxton CE Primary School
Oakfield Junior School

Secondary

Greendock School
Wilsborough Comprehensive School

Special

Arbour Brooke School
Mullins School

Partnership welcomed

Primary

Cedar Way Primary School
Inchester Primary School
Siddington CE Primary School
Telling Primary School

Secondary

Barburn School
Swoughton Primary School
Warby Community College

Special

No schools

Careers

Strength you could share with others

Primary

Rivendale Junior School
Westfield Primary School

Secondary

Eavers School
Warby Community College

Special

Great Stopford School
Mullins School

Partnership welcomed

Primary

Cedar Way Primary School
Lakesley CE Primary School
Rivendale Junior School
Telling Primary School

Secondary

Wilsborough Comprehensive School

Special

Mullins School

Infrastructure, administration & community issues

Administration services

Strength you could share with others

Primary

Cedar Way Primary School
Oakfield Junior School

Secondary

Greendock School
Shires School

Special

Mullins School

Partnership welcomed

Primary

Brinxton CE Primary School
Mickleton Science College
Westfield Primary School

Secondary

Barburn School
Greendock School
Wilsborough Comprehensive School

Special

Mullins School

Information management

Strength you could share with others

Primary

Inchester Primary School
Oakfield Junior School
Rivendale Junior School
St Joseph's C of E VA Primary School, Great Lakley
Telling Primary School
Westfield Primary School

Secondary

Eavers School
The King William School

Special

No schools

Partnership welcomed

Primary

Broadlands Primary School

Secondary

Springfield High School & Sixth Form College

Special

No schools

Financial management

Strength you could share with others

Primary

Siddington CE Primary School
Telling Primary School

Secondary

Springfield High School & Sixth Form College
Wilsborough Comprehensive School

Special

Great Stopford School

Partnership welcomed

Primary

Broadlands Primary School
Oakfield Junior School
Westfield Primary School

Secondary

No schools

Special

Great Stopford School

Catering management

Strength you could share with others

Primary

Cedar Way Primary School
Rivendale Junior School
St Joseph's C of E VA Primary School, Great Lakley
Telling Primary School

Secondary

Barburn School
Marston School

Special

Arbour Brooke School

Partnership welcomed

Primary

Broadlands Primary School
Siddington CE Primary School

Secondary

Barburn School
Hayden School

Special

No schools

Buildings & site management

Strength you could share with others

Primary

Inchester Primary School
Siddington CE Primary School

Secondary

Barburn School

Special

No schools

Partnership welcomed

Primary

Brinxton CE Primary School
Inchester Primary School
Siddington CE Primary School

Secondary

Warby Community College

Special

No schools

Community partnerships

Strength you could share with others

Primary

Broadlands Primary School
Telling Primary School

Secondary

Harton Community College
Hayden School
The King William School
Warby Community College
Wilsborough Comprehensive School

Special

No schools

Partnership welcomed

Primary

Cedar Way Primary School
Telling Primary School
Waringtree CE VA Primary School

Secondary

Harton Community College
Marston School

Special

Great Stopford School

Extended provision

Strength you could share with others

Primary

Broadlands Primary School
Cedar Way Primary School
Inchester Primary School
Rivendale Junior School
Siddington CE Primary School

Secondary

Harton Community College
Shires School
Springfield High School & Sixth Form College

Special

No schools

Partnership welcomed

Primary

No schools

Secondary

Shires School
Warby Community College

Special

No schools

Individual school data

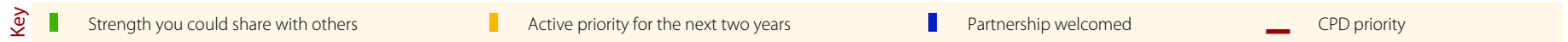
The table on pages 44 to 55 gives a school-by-school breakdown of responses to the *Improvement Planner* in your group. A key to the codes used is provided below.

- Strength you could share with others
- Active priority for the next two years
- Partnership welcomed
- CPD priority

On pages 56 to 58, you are shown the schools' contact details and any additional comments they have made.

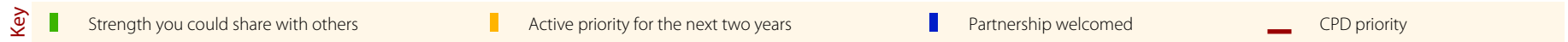
School data

Curriculum areas



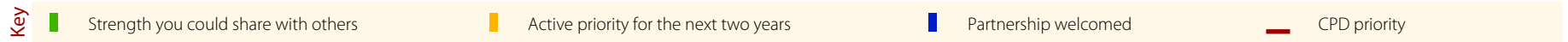
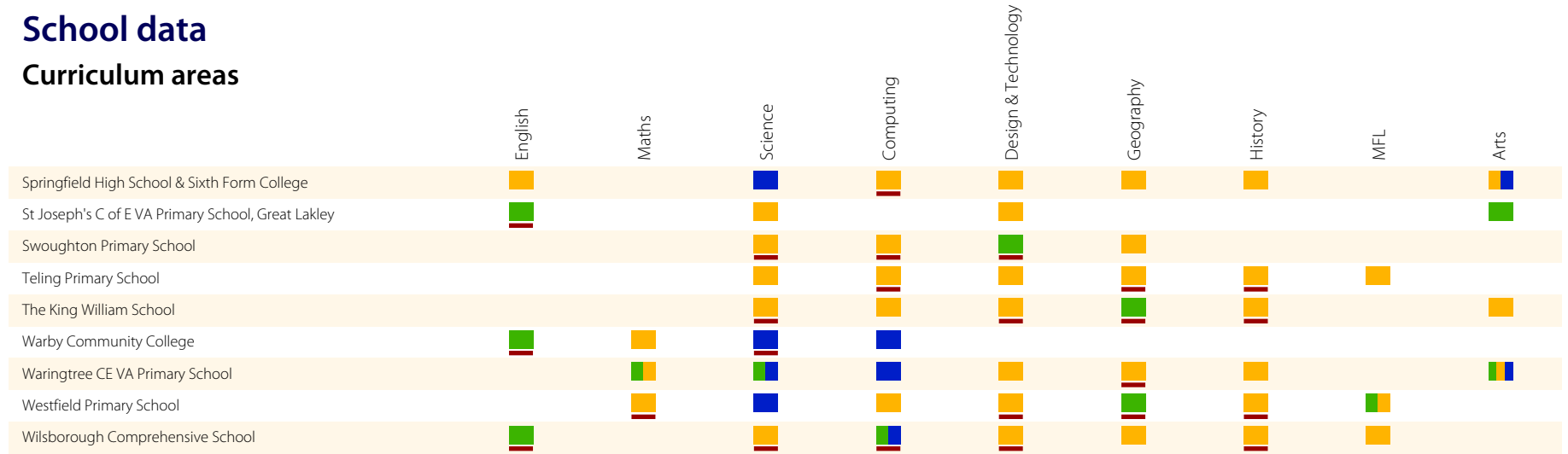
School data

Curriculum areas



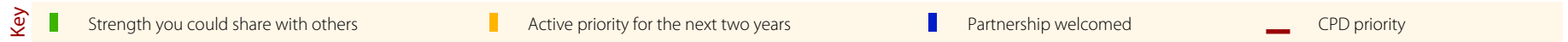
School data

Curriculum areas



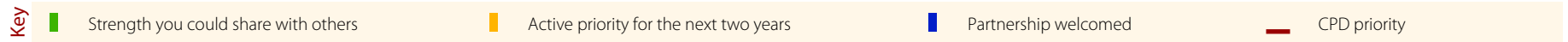
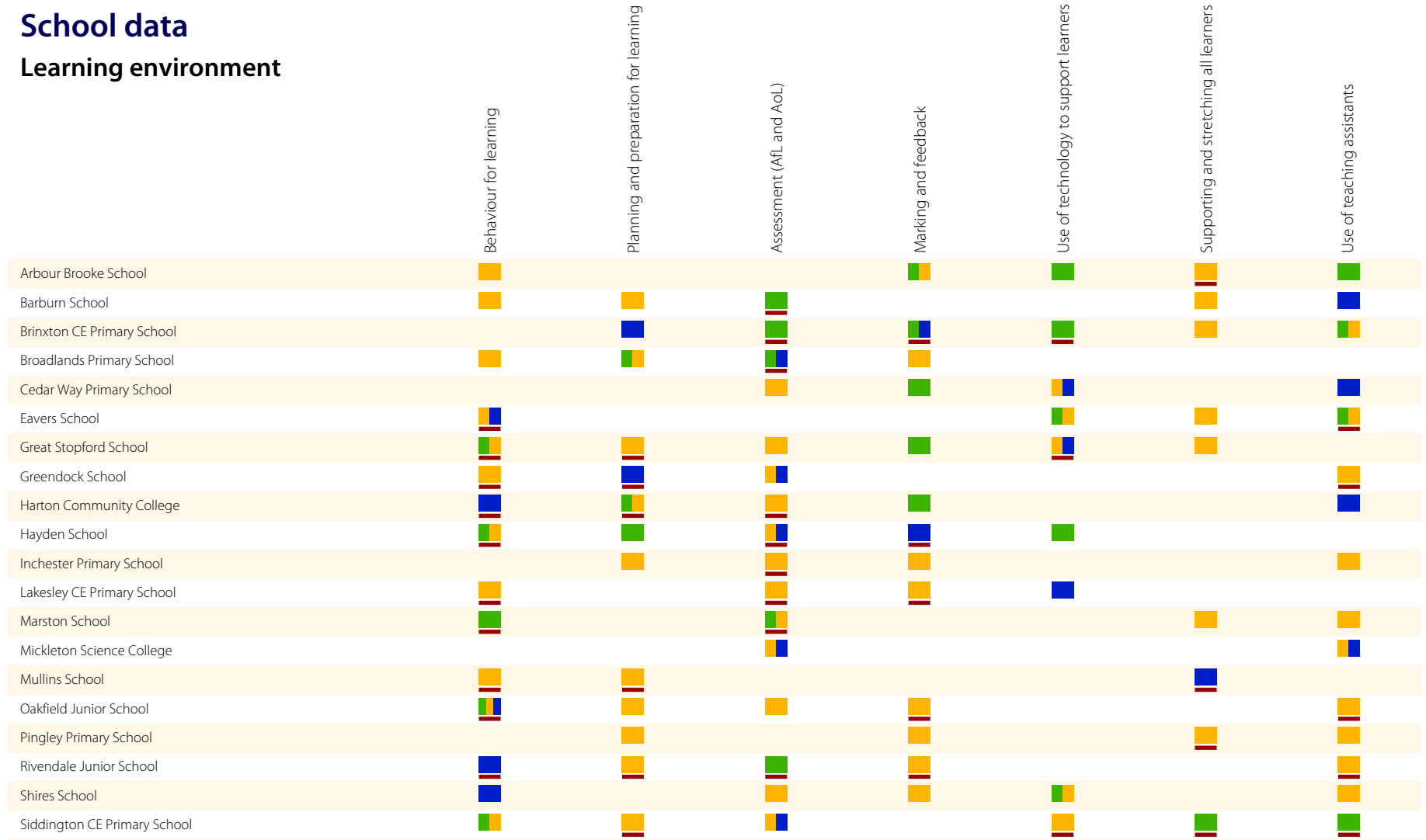
School data

Curriculum areas



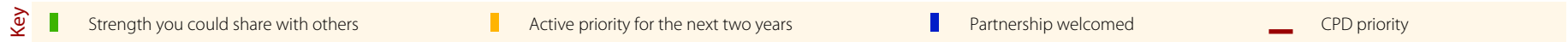
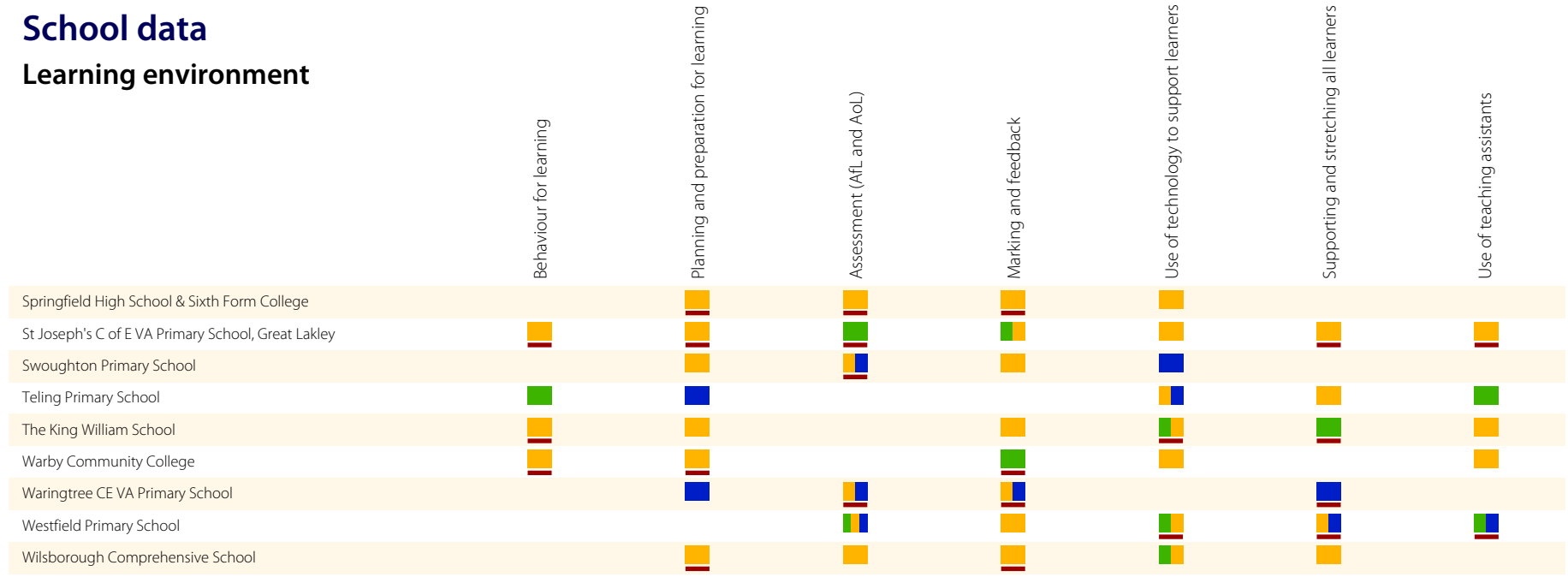
School data

Learning environment



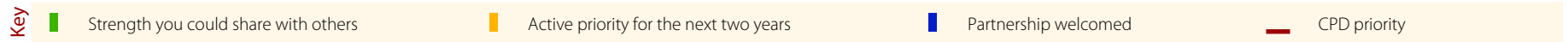
School data

Learning environment



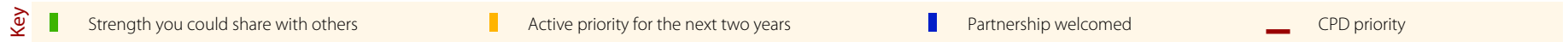
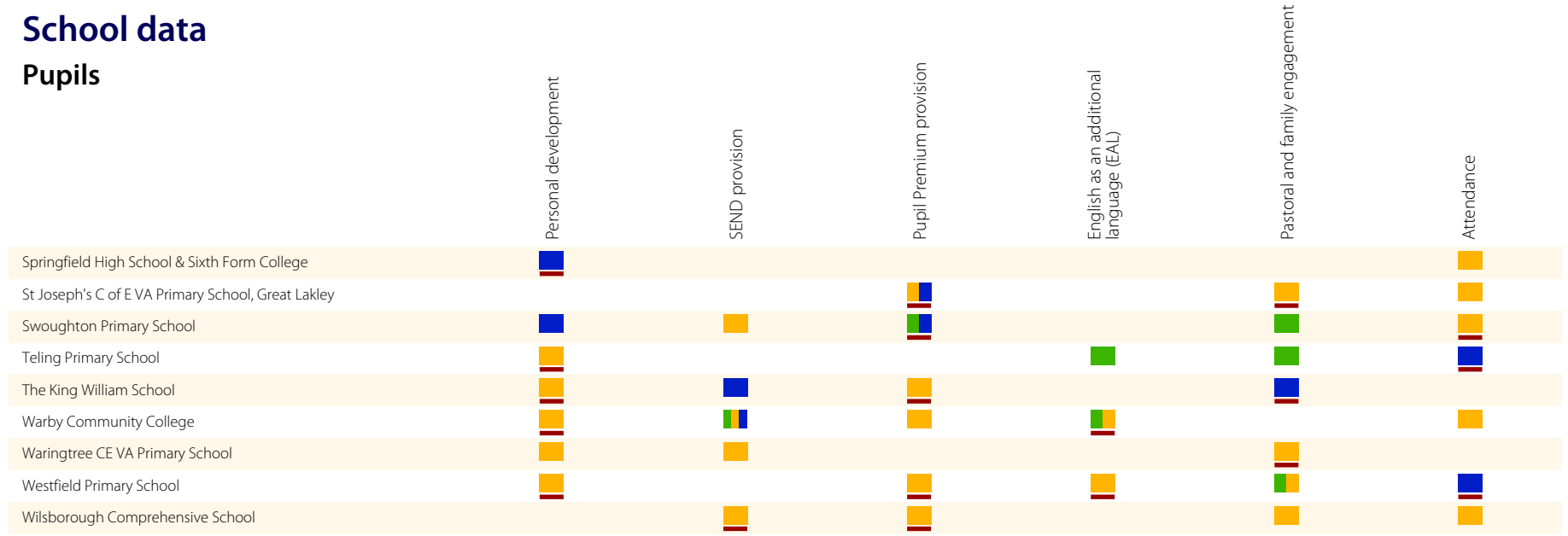
School data

Pupils



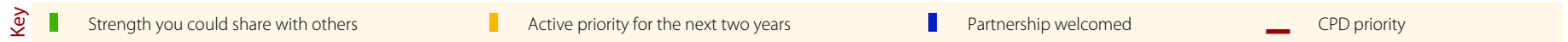
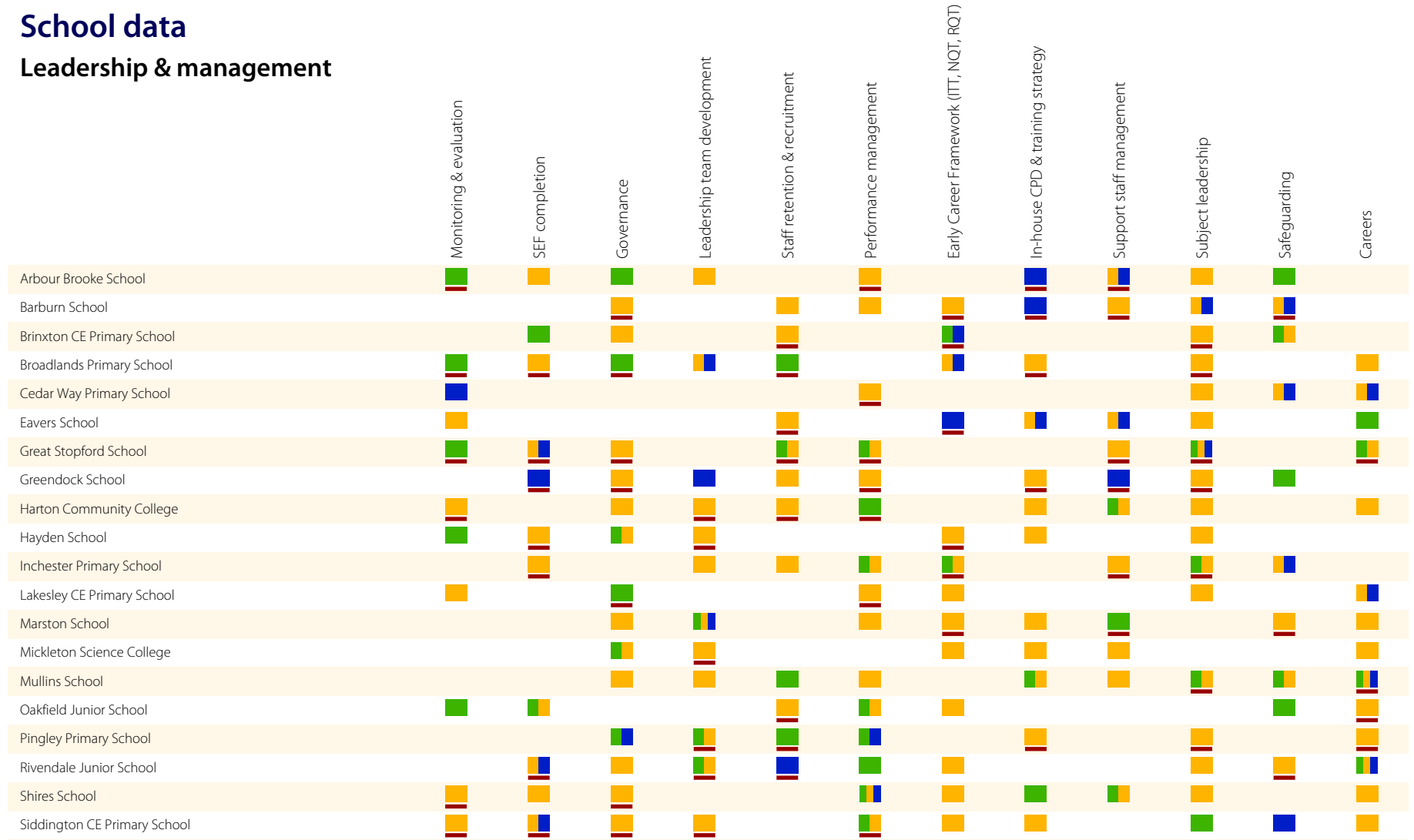
School data

Pupils



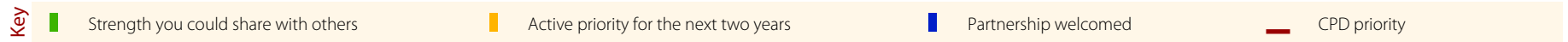
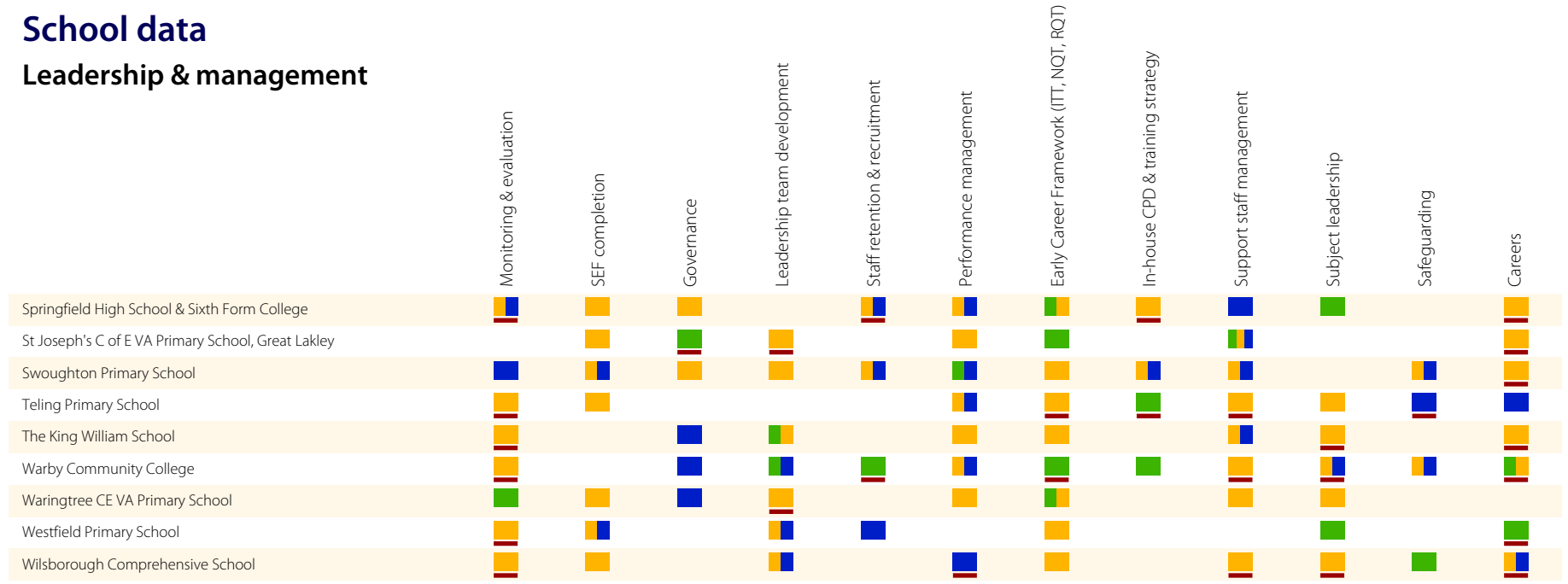
School data

Leadership & management



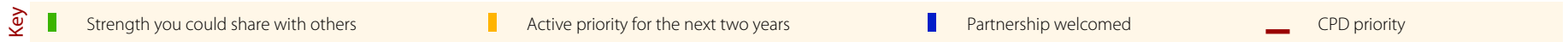
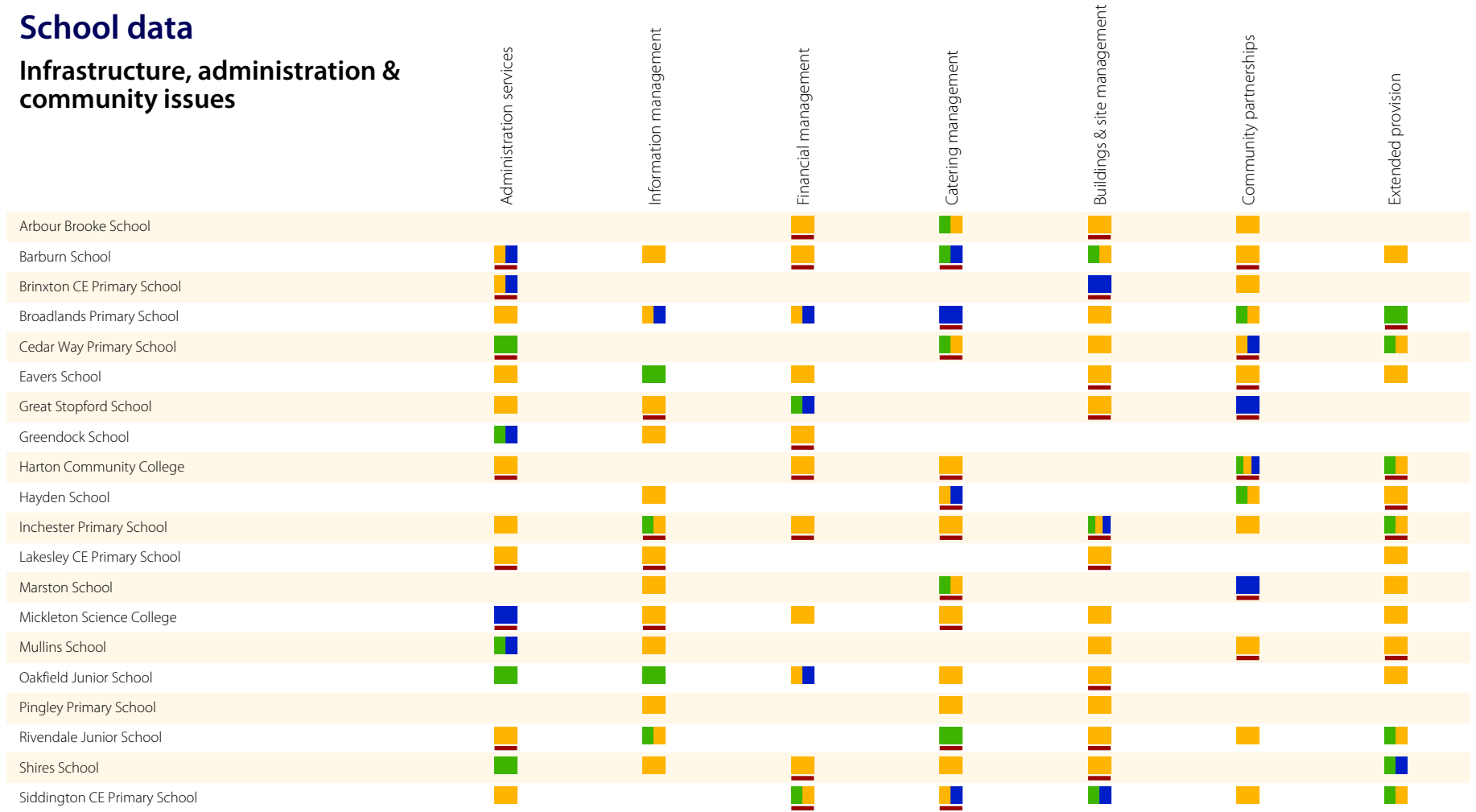
School data

Leadership & management



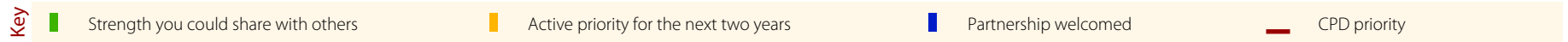
School data

Infrastructure, administration & community issues



School data

Infrastructure, administration & community issues



Additional school information

Arbour Brooke School	<i>Maxwell Stephenson 01632 781679</i>
15 Arbour Street Shireford TX4 7HF	headteacher@arbourbrooke.anon.sch.uk DCSF No: 2257
CPD activities related to support staff would be of interest.	
Barburn School	<i>Carlos Hall 01632 335046</i>
60 Barburn Street Shireford TX7 6TC	headteacher@barburn.anon.sch.uk DCSF No: 2245
Would like more information on pastoral care.	
Brinxton CE Primary School	<i>Lindsay Cason 01632 305082</i>
22 Brinxton Street Shireford TX8 4VL	headteacher@brinxton.anon.sch.uk DCSF No: 2235
Learning and the curriculum are our main priorities.	
Broadlands Primary School	<i>Shawn Woodworth 01632 250682</i>
30 Broadlands Street Shireford TX1 7IE	headteacher@broadlands.anon.sch.uk DCSF No: 2241
Several community partnerships already proving very successful.	
Cedar Way Primary School	<i>Santo Stafford 01632 658964</i>
37 Cedar Way Shireford TX1 6EE	headteacher@cedar-way.anon.sch.uk DCSF No: 2236
Would like more information on support staff management.	
Eavers School	<i>Christine Kava 01632 845672</i>
44 Eavers Street Shireford TX0 5OF	headteacher@eavers.anon.sch.uk DCSF No: 2248
Great Stopford School	<i>Jazmine Siegrist 01632 766521</i>
36 Great Stopford Street Shireford TX4 3KU	headteacher@great-stopford.anon.sch.uk DCSF No: 2258
Greendock School	<i>Sanford Schreckengost 01632 708434</i>
61 Greendock Street Shireford TX5 5SI	headteacher@greendock.anon.sch.uk DCSF No: 2250
Would be happy to share our experiences in providing family learning.	
Harton Community College	<i>Ahmed Wiggins 01632 388302</i>
53 Harton Street Shireford TX3 4NB	headteacher@harton.anon.sch.uk DCSF No: 2247

Hayden School *Luana Ludwig 01632 597639*

24 Hayden Street
Shireford
TX3 0OY

headteacher@hayden.anon.sch.uk
DCSF No: 2254

Community partnerships already established with local businesses.

Inchester Primary School *Loriann Fillmore 01632 281899*

86 Inchester Street
Shireford
TX4 0OH

headteacher@inchester.anon.sch.uk
DCSF No: 2242

Would like to discuss preparation for inspection and SEF completion.

Lakesley CE Primary School *Hermine Koepple 01632 674232*

60 Lakesley Street
Shireford
TX7 5CG

headteacher@lakesley.anon.sch.uk
DCSF No: 2233

Marston School *Samira Christner 01632 605688*

62 Marston Street
Shireford
TX2 6ZQ

headteacher@marston.anon.sch.uk
DCSF No: 2249

Mickleton Science College *Eugenia Curry 01632 744985*

61 Swoughton Street
Shireford
TX4 8PJ

headteacher@swoughton.anon.sch.uk
DCSF No: 2234

Every Child Matters a priority.

Mullins School *Tessie Wilo 01632 342873*

45 Mullins Street
Shireford
TX3 1BS

headteacher@mullins.anon.sch.uk
DCSF No: 2259

Oakfield Junior School *Bryanna Walker 01632 341943*

63 Oakfield Street
Shireford
TX3 2DW

headteacher@oakfield.anon.sch.uk
DCSF No: 2244

Would be interested to hear about CPD courses related to subject leadership.

Pingley Primary School *Elwood Eliza 01632 305175*

83 Pingley Street
Shireford
TX6 3OZ

headteacher@pingley.anon.sch.uk
DCSF No: 2243

Rivendale Junior School *Wilford Bullard 01632 768927*

65 Rivendale Street
Shireford
TX4 0KZ

headteacher@rivendale.anon.sch.uk
DCSF No: 2231

Would particularly be interested in forming partnerships in the provision of vocational education.

Shires School *Meryl Patton 01632 350664*

77 Shires Street
Shireford
TX5 7UO

headteacher@shires.anon.sch.uk
DCSF No: 2252

Siddington CE Primary School *Arnold Hall 01632 596440*85 Siddington Street
Shireford
TX6 6CPheadteacher@siddington.anon.sch.uk
DCSF No: 2240**Springfield High School & Sixth Form College** *Susanne Willey 01632 308573*19 Springfield Street
Shireford
TX2 6TIheadteacher@springfield.anon.sch.uk
DCSF No: 2253**St Joseph's C of E VA Primary School, Great Lakley** *Carmen Hunt 01632 841891*32 St Joseph's Street
Shireford
TX0 5EOheadteacher@st-josephs.anon.sch.uk
DCSF No: 2239

Would be happy to share our experiences in monitoring and evaluation.

Swoughton Primary School *Rocio Steele 01632 790774*32 Mickleton Street
Shireford
TX2 7XUheadteacher@mickleton.anon.sch.uk
DCSF No: 2256**Teling Primary School** *Hoyt Myers 01632 741564*49 Teling Street
Shireford
TX5 5WEheadteacher@teling.anon.sch.uk
DCSF No: 2232

Would be happy to share our experiences in providing extended school activities.

The King William School *Mark Henry 01632 254694*75 King William Street
Shireford
TX6 1AQheadteacher@king-william.anon.sch.uk
DCSF No: 2246**Warby Community College** *Aaron Watkins 01632 322018*87 Warby Street
Shireford
TX3 3AHheadteacher@warby.anon.sch.uk
DCSF No: 2255**Waringtree CE VA Primary School** *Marion Leslie 01632 704586*87 Waringtree Street
Shireford
TX2 4MMheadteacher@waringtree.anon.sch.uk
DCSF No: 2237**Westfield Primary School** *Sydney Children 01632 393407*11 Westfield Street
Shireford
TX8 6ZLheadteacher@westfield.anon.sch.uk
DCSF No: 2238**Wilsborough Comprehensive School** *Ashli Drumm 01632 328088*84 Wilsborough Street
Shireford
TX0 6CWheadteacher@wilsborough.anon.sch.uk
DCSF No: 2251

Performance management a priority.